

## Recombinant Human TGFB1 protein, His-Avi-tagged, Biotinylated

Cat. No. TGFB1-4633H Lot. No. (See product label)

### SPECIFICATION

<b>Product Overview</b>	Biotinylated Recombinant Human TGFB1 protein(P01137)(Leu30-Ser390(C33S)), fused with N-terminal His and Avi tag, was expressed in HEK293.
<b>Species</b>	Human
<b>Source</b>	HEK293
<b>ProteinLength</b>	Leu30-Ser390(C33S)
<b>Tag</b>	N-His-Avi
<b>Conjugation/Label</b>	Biotin
<b>Form</b>	Lyophilized from 0.22µm filtered solution in PBS (pH 7.4). Normally 5% trehalose is added as protectant before lyophilization.
<b>Bio-activity</b>	Immobilized Human ITGAV&ITGB6, His Tag at 1µg/ml (100µl/Well) on the plate. Dose response curve for Biotinylated Human Latent TGF beta 1, His Tag with the EC50 of 0.53µg/ml determined by ELISA.
<b>Molecular Mass</b>	The protein has a predicted MW of 44.2 kDa. Due to glycosylation, the protein migrates to 40-50 (LAP) /13-15 (Mature TGF beta 1) kDa based on Tris-Bis PAGE result.

 Tel: 1-631-559-9269 1-516-512-3133

 Email: [info@creative-biomart.com](mailto:info@creative-biomart.com)  Fax: 1-631-938-8127

 45-1 Ramsey Road, Shirley, NY 11967, USA

<b>Endotoxin</b>	Less than 1EU per µg by the LAL method.
<b>Purity</b>	> 95% as determined by Tris-Bis PAGE; > 93% as determined by HPLC
<b>Storage</b>	Reconstituted protein stable at -80°C for 12 months, 4°C for 1 week. Use a manual defrost freezer and avoid repeated freeze-thaw cycles.
<b>Reconstitution</b>	Centrifuge tubes before opening. Reconstituting to a concentration more than 100 µg/ml is recommended. Dissolve the lyophilized protein in distilled water.
<b>Conjugation</b>	Biotin

## GENE INFORMATION

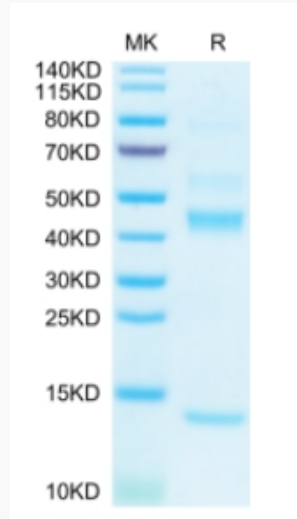
<b>Gene Name</b>	TGFB1 transforming growth factor, beta 1 [ Homo sapiens ]
<b>Official Symbol</b>	TGFB1
<b>Synonyms</b>	TGFB1; transforming growth factor, beta 1; DPD1, TGFB; transforming growth factor beta-1; Camurati Engelmann disease; CED; TGFbeta; TGF-beta-1; TGF-beta 1 protein; latency-associated peptide; LAP; DPD1; TGFB;
<b>Gene ID</b>	7040
<b>mRNA Refseq</b>	NM_000660
<b>Protein Refseq</b>	NP_000651
<b>MIM</b>	190180
<b>UniProt ID</b>	P01137

 Tel: 1-631-559-9269 1-516-512-3133

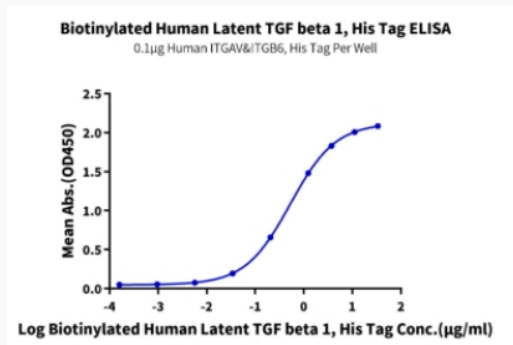
 Email: [info@creative-biomart.com](mailto:info@creative-biomart.com)  Fax: 1-631-938-8127

 45-1 Ramsey Road, Shirley, NY 11967, USA

**Tris-Bis PAGE**



**ELISA Data**



 Tel: 1-631-559-9269 1-516-512-3133

 Email: [info@creative-biomart.com](mailto:info@creative-biomart.com)  Fax: 1-631-938-8127

 45-1 Ramsey Road, Shirley, NY 11967, USA