

Active Recombinant Human TGFB1 protein, His-tagged

Cat. No. TGFB1-489H Lot. No. (See product label)

SPECIFICATION

Product Overview	Active Recombinant Human TGFB1 protein(NP_000651.3) (Met 1-Ser 390) was expressed in HEK293, fused with a C-terminal polyhistidine tag.
Species	Human
Source	HEK293
ProteinLength	1-390 aa
Form	Lyophilized from sterile PBS, pH 7.4.
Bio-activity	Measured by its ability to bind biotinylated Human ALK1-Fc in functional Elisa.
Molecular Mass	The recombinant human latent TGFβ1 consists of 370 amino acids and has a calculated molecular mass of 42.4 kDa. In SDS-PAGE under reducing conditions, the apparent molecular mass of rh TGFβ1 is approximately 16, 38 and 55 kDa corresponding to mature TGFβ1, LAP protein and inactive latent TGFβ1 respectively due to glycosylation. In non-reduced SDS-PAGE, it migrates as an approximately 110 kDa protein consisting of a TGFβ1 homodimer non-covalently linked to a LAP homodimer.
Endotoxin	< 1.0 EU per μg of the protein as determined by the LAL method.
Purity	> 95 % as determined by SDS-PAGE

 Tel: 1-631-559-9269 1-516-512-3133

 Email: info@creative-biomart.com  Fax: 1-631-938-8127

 45-1 Ramsey Road, Shirley, NY 11967, USA

Storage Store it under sterile conditions at -20°C to -80°C upon receiving. Recommend to aliquot the protein into smaller quantities for optimal storage. Avoid repeated freeze-thaw cycles.

Reconstitution It is recommended that sterile water be added to the vial to prepare a stock solution of 0.2 ug/ul. Centrifuge the vial at 4°C before opening to recover the entire contents.

GENE INFORMATION

Gene Name TGFB1 transforming growth factor, beta 1 [Homo sapiens]

Official Symbol TGFB1

Synonyms TGFB1; transforming growth factor, beta 1; DPD1, TGFB; transforming growth factor beta-1; Camurati Engelmann disease; CED; TGFbeta; TGF-beta-1; TGF-beta 1 protein; latency-associated peptide; LAP; DPD1; TGFB;

Gene ID 7040

mRNA Refseq NM_000660

Protein Refseq NP_000651

MIM 190180

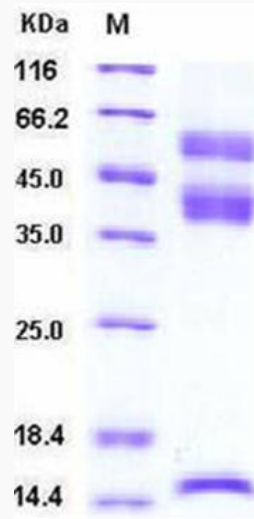
UniProt ID P01137

 Tel: 1-631-559-9269 1-516-512-3133

 Email: info@creative-biomart.com  Fax: 1-631-938-8127

 45-1 Ramsey Road, Shirley, NY 11967, USA

SDS-PAGE



 Tel: 1-631-559-9269 1-516-512-3133

 Email: info@creative-biomart.com  Fax: 1-631-938-8127

 45-1 Ramsey Road, Shirley, NY 11967, USA