

Recombinant Human TGFB1 protein, Fc-tagged

Cat. No. TGFB1-509H Lot. No. (See product label)

SPECIFICATION

Product Overview	Recombinant Human TGFB1 protein was fused to Human Fc-tag and expressed in human 293 cells (HEK293).
Species	Human
Source	HEK293
ProteinLength	594
Description	<p>This gene encodes a secreted ligand of the TGF-beta (transforming growth factor-beta) superfamily of proteins. Ligands of this family bind various TGF-beta receptors leading to recruitment and activation of SMAD family transcription factors that regulate gene expression. The encoded preproprotein is proteolytically processed to generate a latency-associated peptide (LAP) and a mature peptide, and is found in either a latent form composed of a mature peptide homodimer, a LAP homodimer, and a latent TGF-beta binding protein, or in an active form consisting solely of the mature peptide homodimer. The mature peptide may also form heterodimers with other TGFB family members. This encoded protein regulates cell proliferation, differentiation and growth, and can modulate expression and activation of other growth factors including interferon gamma and tumor necrosis factor alpha. This gene is frequently upregulated in tumor cells, and mutations in this gene result in Camurati-Engelmann disease.</p>
Molecular Mass	The predicted molecular mass is 67 kDa, and the actual MW is about 80 kDa in SDS-

 Tel: 1-631-559-9269 1-516-512-3133

 Email: info@creative-biomart.com  Fax: 1-631-938-8127

 45-1 Ramsey Road, Shirley, NY 11967, USA

PAGE under reducing conditions.

AA Sequence

LSTCKTIDMELVKRKRIEAIARGQILSKLRLASPPSQGEVPPGPLPEAVLALYNSTRDRV
 AGESAEPEPEPEADYYAKEVTRVLMVETHNEIYDKFKQSTHSIYMFFNTSELREAVP
 EPVLLSRAELRLLRLKLVKVEQHVELYQKYSNNSWRYLNRLLAPSDSPEWLSFDVT
 GVVRQWLSRGGEIEGFRLSAHCSCDSRDNTLQVDINGFTTGRRGDLATIHGMNRPF
 LLLMATPLERAQHLQSSRHRRALDTNYCFSSTEKNCCVRQLYIDFRKDLGWKWIHE
 PKGYHANFCLGPCPYIWSLDTQYSKVLALYNQHNPASAAAPCCVPALEPLPIVYV
 GRKPKVEQLSNMIVRSCKCSGEPKSADKTHTCPPCPAPPELLGGPSVFLFPPKPKDT
 LMISRTPEVTCVVVDVSHEDPEVKFNWYVDGVEVHNAKTKPREEQYNSTYRVVSVL
 TVLHQDWLNGKEYKCKVSNKALPAPIEKTISKAKGQPREPQVYTLPPSREEMTKNQ
 VSLTCLVKGFPYPSDIAVEWESNGQPENNYKTTTPVLDSDGSFFLYSKLTVDKSRWQ
 QGNVFSCSVMHEALHNHYTQKSLSLSPGK

Endotoxin

< 1EU/mg as determined by LAL test.

Purity

>95%, by SDS-PAGE under reducing conditions.

Storage

The product should be stored at -70 centigrade. Please do not repeated freeze-thaw cycles.

Reconstitution

It is recommended that sterile water be added to the vial to prepare a stock solution of 0.25 mg/ml. Centrifuge the vial at 4 centigrade before opening to recover the entire contents.

GENE INFORMATION

Gene Name

TGFB1

Official Symbol

TGFB1

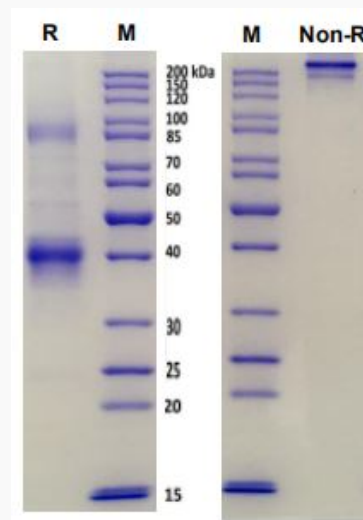
 Tel: 1-631-559-9269 1-516-512-3133

 Email: info@creative-biomart.com  Fax: 1-631-938-8127

 45-1 Ramsey Road, Shirley, NY 11967, USA

Synonyms	CED; LAP; DPD1; TGFB; IBDIMDE; TGFbeta; TGF-beta1
Gene ID	7040
mRNA Refseq	NM_000660.7
Protein Refseq	NP_000651.3
MIM	190180
UniProt ID	P01137

**SDS-PAGE of
TGFB1-509H**



Lane1 Human TGFbeta1/hFc Reducing. Lane2 Human TGFbeta1/hFc Non-Reducing.

Tel: 1-631-559-9269 1-516-512-3133

Email: info@creative-biomart.com Fax: 1-631-938-8127

45-1 Ramsey Road, Shirley, NY 11967, USA