

## Active Recombinant Bovine TGFB1 protein, His-GST-tagged

Cat. No. TGFB1-524C Lot. No. (See product label)

### SPECIFICATION

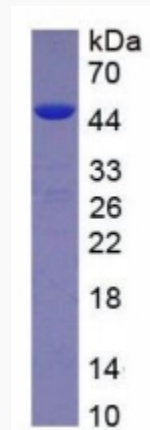
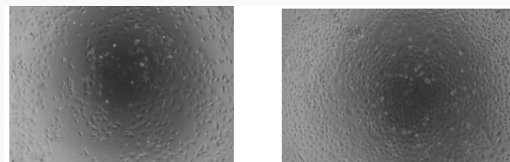
<b>Product Overview</b>	Active Recombinant Bovine TGFB1 protein(P18341)(279~390 aa), fused with N-terminal His tag and GST tag, was expressed in E.coli.
<b>Species</b>	Bovine
<b>Source</b>	E.coli
<b>ProteinLength</b>	279-390 aa
<b>Form</b>	Lyophilized from sterile PBS, pH7.4, containing 0.01% SKL, 1mM DTT, 5% Trehalose and Proclin300.
<b>Bio-activity</b>	<p>Transforming growth factor beta 1 (TGF-<math>\beta</math>1) is a polypeptide member of the transforming growth factor beta superfamily of cytokines. It is a secreted protein that performs many cellular functions, including the control of cell growth, cell proliferation, cell differentiation, and apoptosis. It is reported that TGF-<math>\beta</math>1 can stimulate cell transformation by Smad signal transduction .To test the bioactivity of TGF-<math>\beta</math>1, A549 cells were seeded into 24-well plate at a density of <math>1 \times 10^6</math> cells/mL, and allowed to attach overnight before treated with certain concentrations of TGF-<math>\beta</math>1. After 48 hours, the morphological changes of A549 were observed by inverted microscope. The results was shown. A549 cells usually have a cobblestone epithelial morphology and corresponding growth pattern. When stimulated with TGF-<math>\beta</math>1, the cells were similar with fibroblasts, the connections between cells became loose.</p>

 Tel: 1-631-559-9269 1-516-512-3133

 Email: [info@creative-biomart.com](mailto:info@creative-biomart.com)  Fax: 1-631-938-8127

 45-1 Ramsey Road, Shirley, NY 11967, USA

<b>Molecular Mass</b>	42.8kDa
<b>Endotoxin</b>	<1.0EU per 1µg (determined by the LAL method).
<b>Purity</b>	> 95% as determined by SDS-PAGE.
<b>Storage</b>	Avoid repeated freeze/thaw cycles. Store at -20°C for 12 months. Aliquot and store at -80°C for 12 months.
<b>Reconstitution</b>	Reconstitute in 10mM PBS (pH7.4) to a concentration of 0.1-1.0 mg/mL. Do not vortex.

**SDS-PAGE****Activity**

 Tel: 1-631-559-9269 1-516-512-3133

 Email: [info@creative-biomart.com](mailto:info@creative-biomart.com)  Fax: 1-631-938-8127

 45-1 Ramsey Road, Shirley, NY 11967, USA