

## Active Recombinant Pig TGFB1 protein, His-tagged

**Cat. No.** TGFB1-530P    **Lot. No.** (See product label)

### SPECIFICATION

<b>Product Overview</b>	Active Recombinant Pig TGFB1 protein(P07200)(279~390 aa), fused with N-terminal His tag, was expressed in E.coli.
<b>Species</b>	Pig
<b>Source</b>	E.coli
<b>ProteinLength</b>	279-390 aa
<b>Form</b>	Lyophilized from sterile PBS, pH7.4, containing 0.01% SKL, 1mM DTT, 5% Trehalose and Proclin300.
<b>Bio-activity</b>	<p>Transforming growth factor beta 1 or TGF-<math>\beta</math>1 is a polypeptide member of the transforming growth factor beta superfamily of cytokines. It is a secreted protein that performs many cellular functions, including the control of cell growth, cell proliferation, cell differentiation and apoptosis. TGF-<math>\beta</math>1 plays an important role in controlling the immune system, and shows different activities on different types of cell, or cells at different developmental stages. Besides, Latent Transforming Growth Factor Beta Binding Protein 1 (LTBP1) has been identified as an interactor of TGF-<math>\beta</math>1, thus a binding ELISA assay was conducted to detect the interaction of recombinant pig TGF-<math>\beta</math>1 and recombinant pig LTBP1. Briefly, TGF-<math>\beta</math>1 were diluted serially in PBS, with 0.01% BSA (pH 7.4). Duplicate samples of 100<math>\mu</math>L were then transferred to LTBP1-coated microtiter wells and incubated for 2h at 37°C. Wells were washed with PBST and incubated for 1h with anti-TGF-<math>\beta</math>1 pAb, then aspirated and washed 3 times. After</p>

 Tel: 1-631-559-9269    1-516-512-3133

 Email: [info@creative-biomart.com](mailto:info@creative-biomart.com)     Fax: 1-631-938-8127

 45-1 Ramsey Road, Shirley, NY 11967, USA

incubation with HRP labelled secondary antibody, wells were aspirated and washed 3 times. With the addition of substrate solution, wells were incubated 15-25 minutes at 37°C. Finally, add 50µ stop solution to the wells and read at 450nm immediately. The binding activity of TGF-β1 and LTBP1 was shown, and this effect was in a dose dependent manner.

**Molecular Mass** 14.3kDa

**Endotoxin** <1.0EU per 1µg (determined by the LAL method).

**Purity** > 97% as determined by SDS-PAGE.

**Storage** Avoid repeated freeze/thaw cycles. Store at -20°C for 12 months. Aliquot and store at -80°C for 12 months.

**Reconstitution** Reconstitute in 10mM PBS (pH7.4) to a concentration of 0.1-1.0 mg/mL. Do not vortex.

## GENE INFORMATION

**Gene Name** TGFB1 transforming growth factor, beta 1 [ *Sus scrofa* ]

**Official Symbol** TGFB1

**Synonyms** TGFB1; transforming growth factor, beta 1; transforming growth factor beta-1; transforming growth factor-beta-1; transforming growth factor, beta 1 (Camurati-Engelmann disease); TGF-BETA-1;

**Gene ID** 397078

**mRNA Refseq** NM\_214015

 Tel: 1-631-559-9269 1-516-512-3133

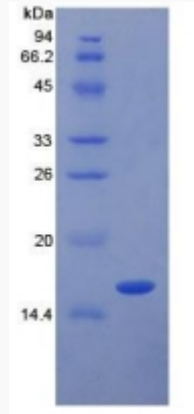
 Email: [info@creative-biomart.com](mailto:info@creative-biomart.com)  Fax: 1-631-938-8127

 45-1 Ramsey Road, Shirley, NY 11967, USA

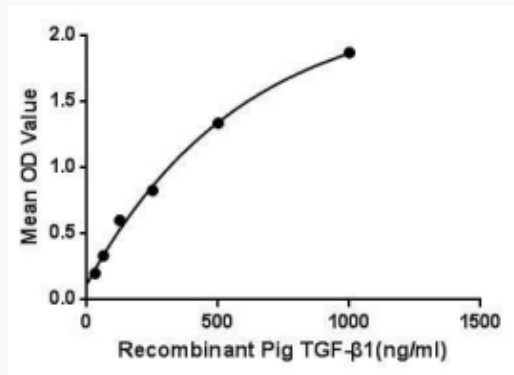
Protein Refseq

NP\_999180

SDS-PAGE



Activity



Tel: 1-631-559-9269 1-516-512-3133

Email: [info@creative-biomart.com](mailto:info@creative-biomart.com) Fax: 1-631-938-8127

45-1 Ramsey Road, Shirley, NY 11967, USA