

Recombinant Human TGFB1 Protein, Myc/DDK-tagged, C13 and N15-labeled

Cat. No. TGFB1-6470H Lot. No. (See product label)

SPECIFICATION

Product Overview TGFB1 MS Standard C13 and N15-labeled recombinant protein (NP_000651) with a C-terminal MYC/DDK tag, was expressed in HEK293 cells.

Species Human

Source HEK293

Description

This gene encodes a secreted ligand of the TGF-beta (transforming growth factor-beta) superfamily of proteins. Ligands of this family bind various TGF-beta receptors leading to recruitment and activation of SMAD family transcription factors that regulate gene expression. The encoded preproprotein is proteolytically processed to generate a latency-associated peptide (LAP) and a mature peptide, and is found in either a latent form composed of a mature peptide homodimer, a LAP homodimer, and a latent TGF-beta binding protein, or in an active form consisting solely of the mature peptide homodimer. The mature peptide may also form heterodimers with other TGFB family members. This encoded protein regulates cell proliferation, differentiation and growth, and can modulate expression and activation of other growth factors including interferon gamma and tumor necrosis factor alpha. This gene is frequently upregulated in tumor cells, and mutations in this gene result in Camurati-Engelmann disease.

Molecular Mass 44.3 kDa

 Tel: 1-631-559-9269 1-516-512-3133

 Email: info@creative-biomart.com  Fax: 1-631-938-8127

 45-1 Ramsey Road, Shirley, NY 11967, USA

AA Sequence

MPPSGLRLLLLLLPLLWLLVLTTPGRPAAGLSTCKTIDMELVKRKRIEAIRGQILSKLRLA
 SPPSQGEVPPGPLPEAVLALYNSTRDRVAGESAEPEPEPEADYYAKEVTRVLMVET
 HNEIYDKFKQSTHSIYMFFNTSELREAVPEPVLLSRAELRLLRLKLVKVEQHVELYQKY
 SNNSWRYLSNRLLAPSDSPEWLSFDVTGVVRQWLSRGGEIEGFRLSAHCSCDSRD
 NTLQVDINGFTTGRRGDLATIHGMNRPFLLLMATPLERAQHLQSSRHRRALDTNYCF
 SSTEKNCCVRQLYIDFRKDLGWKWIHEPKGYHANFCLGPCPYIWSLDTQYSKVLAL
 YNQHNPGASAAPCCVPQALEPLPIVYVYVGRKPKVEQLSNMIVRSCKCSTRTRPLEQ
 KLISEEDLAANDILDYKDDDDKV

Purity > 80% as determined by SDS-PAGE and Coomassie blue staining

Stability Stable for 3 months from receipt of products under proper storage and handling conditions.

Storage Store at -80 centigrade. Avoid repeated freeze-thaw cycles.

Concentration 50 µg/mL as determined by BCA

Storage Buffer 100 mM glycine, 25 mM Tris-HCl, pH 7.3.

GENE INFORMATION

Gene Name TGFB1 transforming growth factor beta 1 [Homo sapiens (human)]

Official Symbol TGFB1

Synonyms TGFB1; transforming growth factor, beta 1; DPD1, TGFB; transforming growth factor beta-1; Camurati Engelmann disease; CED; TGFbeta; TGF-beta-1; TGF-beta 1 protein; latency-associated peptide; LAP; DPD1; TGFB;

Gene ID 7040

 Tel: 1-631-559-9269 1-516-512-3133

 Email: info@creative-biomart.com  Fax: 1-631-938-8127

 45-1 Ramsey Road, Shirley, NY 11967, USA

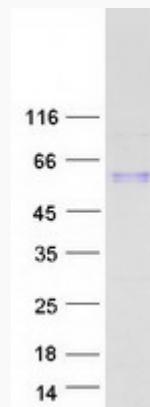
mRNA Refseq [NM_000660](#)

Protein Refseq [NP_000651](#)

MIM [190180](#)

UniProt ID [P01137](#)

SDS-PAGE



 Tel: 1-631-559-9269 1-516-512-3133

 Email: info@creative-biomart.com  Fax: 1-631-938-8127

 45-1 Ramsey Road, Shirley, NY 11967, USA