

Recombinant Mouse TGFB1 Protein(Leu30-Ser390), His-tagged

Cat. No. TGFB1-6543M Lot. No. (See product label)

SPECIFICATION

Product Overview	Recombinant Mouse TGFB1 Protein(Leu30-Ser390)(P04202) is expressed from HEK293 with His tag at the N-Terminus.
Species	Mouse
Source	HEK293
ProteinLength	Leu30-Ser390
Form	Lyophilized from 0.22µm filtered solution in PBS (pH 7.4). Normally 8% trehalose is added as protectant before lyophilization.
Bio-activity	Immobilized Mouse Latent TGF beta 1, His Tag at 5µg/ml (100µl/well) on the plate. Dose response curve for Biotinylated Human ITGAV&ITGB6, hFc Tag with the EC50 of 0.87µg/ml determined by ELISA.
Molecular Mass	The protein has a predicted MW of 29.5/12.9 kDa. Due to glycosylation, the protein migrates to 40-50/14-15 kDa based on Tris-Bis PAGE result.
Endotoxin	Less than 1EU per µg by the LAL method.
Purity	> 95% as determined by Tris-Bis PAGE
Storage	-20 to -80°C for 12 months as supplied from date of receipt. -80°C for 3-6 months after reconstitution.

 Tel: 1-631-559-9269 1-516-512-3133

 Email: info@creative-biomart.com  Fax: 1-631-938-8127

 45-1 Ramsey Road, Shirley, NY 11967, USA

2-8°C for 2-7 days after reconstitution.

Recommend to aliquot the protein into smaller quantities for optimal storage. Please minimize freeze-thaw cycles.

Reconstitution

Centrifuge the tube before opening. Reconstituting to a concentration more than 100 µg/ml is recommended. Dissolve the lyophilized protein in distilled water.

GENE INFORMATION**Gene Name**

[Tgfb1 transforming growth factor, beta 1 \[Mus musculus \]](#)

Official Symbol

[TGFB1](#)

Synonyms

TGFB1; transforming growth factor, beta 1; transforming growth factor beta-1; TGF-beta 1; TGF-beta-1; regulatory protein; transforming growth factor-beta 1; Tgfb; Tgfb-1; TGFbeta1; TGF-beta1;

Gene ID

[21803](#)

mRNA Refseq

[NM_011577](#)

Protein Refseq

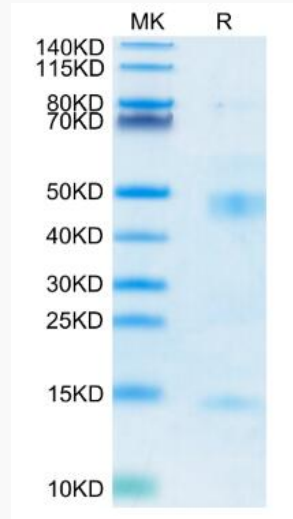
[NP_035707](#)

 Tel: 1-631-559-9269 1-516-512-3133

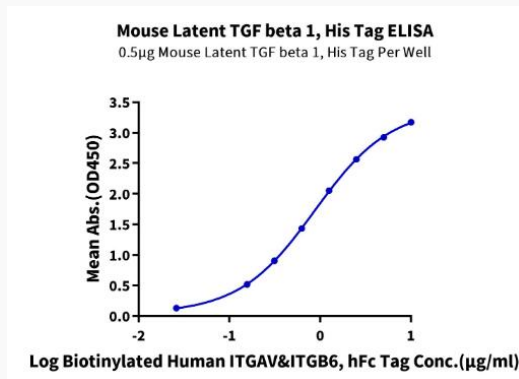
 Email: info@creative-biomart.com  Fax: 1-631-938-8127

 45-1 Ramsey Road, Shirley, NY 11967, USA

Tris-Bis PAGE



ELISA



 Tel: 1-631-559-9269 1-516-512-3133

 Email: info@creative-biomart.com  Fax: 1-631-938-8127

 45-1 Ramsey Road, Shirley, NY 11967, USA