

Recombinant Full Length Human TGFB2 Protein, C-Flag-tagged

Cat. No. TGFB2-1502HFL **Lot. No.** (See product label)

SPECIFICATION

Product Overview

Recombinant Full Length Human TGFB2 Protein, fused to Flag-tag at C-terminus, was expressed in Mammalian cells.

Species

Human

Source

Mammalian Cells

Description

This gene encodes a secreted ligand of the TGF-beta (transforming growth factor-beta) superfamily of proteins. Ligands of this family bind various TGF-beta receptors leading to recruitment and activation of SMAD family transcription factors that regulate gene expression. The encoded preproprotein is proteolytically processed to generate a latency-associated peptide (LAP) and a mature peptide, and is found in either a latent form composed of a mature peptide homodimer, a LAP homodimer, and a latent TGF-beta binding protein, or in an active form consisting solely of the mature peptide homodimer. The mature peptide may also form heterodimers with other TGF-beta family members. Disruption of the TGF-beta/SMAD pathway has been implicated in a variety of human cancers. A chromosomal translocation that includes this gene is associated with Peters' anomaly, a congenital defect of the anterior chamber of the eye. Mutations in this gene may be associated with Loeys-Dietz syndrome. This gene encodes multiple isoforms that may undergo similar proteolytic processing.

Form

25 mM Tris HCl, pH 7.3, 100 mM glycine, 10% glycerol.

 Tel: 1-631-559-9269 1-516-512-3133

 Email: info@creative-biomart.com  Fax: 1-631-938-8127

 45-1 Ramsey Road, Shirley, NY 11967, USA

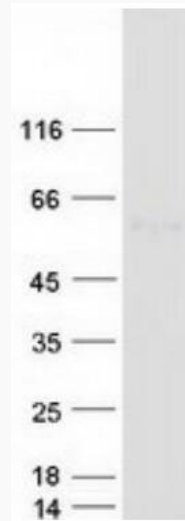
Molecular Mass	47.6 kDa
AA Sequence	<p>MHYCVLSAFLILHLVTVALSLSLSTCSTLDMDQFMRKRIEAIHQILSKLKLTSPPEDYPE PEEVPPEVISI YNSTRDLLQEKASRRAAACERERSDEEYAKEVYKIDMPPFFPSEN AIPPTFYRPFYFRIVRFDVSAMEKN ASNLVKAEFRVFRQLQNPKARVPEQRIELYQILKS KDLTSPTRQYIDSKVVKTRAEGEWLSFDVTDVHEW LHHKDRNLGFKISLHPCCT FVPSNNYIIPNKSEELEAFAGIDGTSTYTSQDQKTIKSTRKKNSGKTPH LLLMLLPS YRLESQQTNRKRALDAAYCFRNVQDNCCLRPLYIDFKRDLGWKWIHEPKGYNA NFCAGAC PYLWSSDTQHSRVLSLYNTINPEASASPCCVSQDLEPLTILYIGKTPKIEQLSNMIVK SCKCSTRTRPLEQKLISEEDLAANDILDYKDDDDKV</p>
Purity	> 80% as determined by SDS-PAGE and Coomassie blue staining.
Stability	Stable for 12 months from the date of receipt of the product under proper storage and handling conditions. Avoid repeated freeze-thaw cycles.
Storage	Store at -80 centigrade.
Concentration	>50 ug/mL as determined by microplate BCA method.
Preparation	Recombinant protein was captured through anti-DDK affinity column followed by conventional chromatography steps.
Protein Families	Druggable Genome, Secreted Protein, Transmembrane
Protein Pathways	Cell cycle, Chronic myeloid leukemia, Colorectal cancer, Cytokine-cytokine receptor interaction, Dilated cardiomyopathy, Hypertrophic cardiomyopathy (HCM), MAPK signaling pathway, Pancreatic cancer, Pathways in cancer, Renal cell carcinoma, TGF-beta signaling pathway

 Tel: 1-631-559-9269 1-516-512-3133

 Email: info@creative-biomart.com  Fax: 1-631-938-8127

 45-1 Ramsey Road, Shirley, NY 11967, USA

Full Length Full L.**GENE INFORMATION****Gene Name** TGFB2 transforming growth factor beta 2 [Homo sapiens (human)]**Official Symbol** TGFB2**Synonyms** LDS4; G-TSF; TGF-beta2**Gene ID** 7042**mRNA Refseq** NM_003238.6**Protein Refseq** NP_003229.1**MIM** 190220**UniProt ID** P61812 Tel: 1-631-559-9269 1-516-512-3133 Email: info@creative-biomart.com  Fax: 1-631-938-8127 45-1 Ramsey Road, Shirley, NY 11967, USA



Coomassie blue staining of purified TGFB2 protein.

 Tel: 1-631-559-9269 1-516-512-3133

 Email: info@creative-biomart.com  Fax: 1-631-938-8127

 45-1 Ramsey Road, Shirley, NY 11967, USA