

Recombinant Human TGFB2 Protein, Myc/DDK-tagged, C13 and N15-labeled

Cat. No. TGFB2-2893H Lot. No. (See product label)

SPECIFICATION

Product Overview TGFB2 MS Standard C13 and N15-labeled recombinant protein (NP_003229) with a C-terminal MYC/DDK tag, was expressed in HEK293 cells.

Species Human

Source HEK293

Description This gene encodes a secreted ligand of the TGF-beta (transforming growth factor-beta) superfamily of proteins. Ligands of this family bind various TGF-beta receptors leading to recruitment and activation of SMAD family transcription factors that regulate gene expression. The encoded preproprotein is proteolytically processed to generate a latency-associated peptide (LAP) and a mature peptide, and is found in either a latent form composed of a mature peptide homodimer, a LAP homodimer, and a latent TGF-beta binding protein, or in an active form consisting solely of the mature peptide homodimer. The mature peptide may also form heterodimers with other TGF-beta family members. Disruption of the TGF-beta/SMAD pathway has been implicated in a variety of human cancers. A chromosomal translocation that includes this gene is associated with Peters' anomaly, a congenital defect of the anterior chamber of the eye. Mutations in this gene may be associated with Loeys-Dietz syndrome. This gene encodes multiple isoforms that may undergo similar proteolytic processing.

Molecular Mass 47.6 kDa

 Tel: 1-631-559-9269 1-516-512-3133

 Email: info@creative-biomart.com  Fax: 1-631-938-8127

 45-1 Ramsey Road, Shirley, NY 11967, USA

AA Sequence	MHYCVLSAFLILHLVTVALSLSTCSTLDMDQFMRKRIEAIRGQILSKLKLTSPPEDYPE PEEVPPEVISIYNSTRDLLQEKASRRAAACERERSDEEYYAKEVYKIDMPPFFPSENA IPPTFYRPYFRIVRFDVSAEMEKNASNLVKAEFRVFRLLQNPKARVPEQRIELYQILKSK DLTSPTQRYIDSKVVKTRAEGEWLSFDVTDVHHEWLHHKDRNLGFKISLHPCCTFV PSNNYIIPNKSEELEARFAGIDGTSTYTSGDQKTIKSTRKKNSGKTPHLLMLLPSYRL ESQQTNRKKRALDAAYCFRNVQDNCCLRPLYIDFKRDLGWKWIHEPKGYNANFC AGACPYLWSSDTQHRSVLSTYNTINPEASASPCCVSQDLEPLTILYYIGKTPKIEQLS NMIVKSCKCSTRTRPLEQKLISEEDLAANDILDYKDDDDKV
Purity	> 80% as determined by SDS-PAGE and Coomassie blue staining
Stability	Stable for 3 months from receipt of products under proper storage and handling conditions.
Storage	Store at -80 centigrade. Avoid repeated freeze-thaw cycles.
Concentration	50 µg/mL as determined by BCA
Storage Buffer	100 mM glycine, 25 mM Tris-HCl, pH 7.3.

GENE INFORMATION

Gene Name	TGFB2 transforming growth factor beta 2 [Homo sapiens (human)]
Official Symbol	TGFB2
Synonyms	TGFB2; transforming growth factor, beta 2; transforming growth factor beta-2; G-TSF; cetermin; polyergin; BSC-1 cell growth inhibitor; glioblastoma-derived T-cell suppressor factor; TGF-beta2; MGC116892;
Gene ID	7042

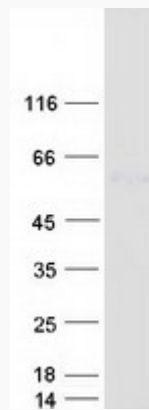
mRNA Refseq [NM_003238](#)

Protein Refseq [NP_003229](#)

MIM [190220](#)

UniProt ID [P61812](#)

SDS-PAGE



 Tel: 1-631-559-9269 1-516-512-3133

 Email: info@creative-biomart.com  Fax: 1-631-938-8127

 45-1 Ramsey Road, Shirley, NY 11967, USA