

Recombinant Human TGFB2 protein

Cat. No. TGFB2-519H Lot. No. (See product label)

SPECIFICATION

| | |
|-------------------------|---|
| Product Overview | Recombinant Human TGFB2 protein(P61812-1)(Arg303-Ser414) was expressed in HEK293. |
| Species | Human |
| Source | HEK293 |
| ProteinLength | Arg303-Ser414 |
| Tag | Non |
| Form | Lyophilized from 0.22µm filtered solution in 4mM HCl. Normally 5% trehalose is added as protectant before lyophilization. |
| Bio-activity | Immobilized Human Mature TGF beta 2, No Tag at 5ug/ml (100ul/Well) on the plate. Dose response curve for Biotinylated Human TGF-beta RII, mFc Tag with the EC50 of 0.28ug/ml determined by ELISA (QC Test). |
| Molecular Mass | The protein has a predicted MW of 12.7 kDa. Due to glycosylation, the protein migrates to 13-15 kDa based on Tris-Bis PAGE result. |
| Endotoxin | Less than 1EU per µg by the LAL method. |
| Purity | > 95% as determined by Tris-Bis PAGE |

 Tel: 1-631-559-9269 1-516-512-3133

 Email: info@creative-biomart.com  Fax: 1-631-938-8127

 45-1 Ramsey Road, Shirley, NY 11967, USA

Storage Reconstituted protein stable at -80°C for 12 months, 4°C for 1 week. Use a manual defrost freezer and avoid repeated freeze-thaw cycles.

Reconstitution Centrifuge tubes before opening. Reconstituting to a concentration more than 100 µg/ml is recommended. Dissolve the lyophilized protein in 4mM HCl.

GENE INFORMATION

Gene Name TGFB2 transforming growth factor, beta 2 [Homo sapiens]

Official Symbol TGFB2

Synonyms TGFB2; transforming growth factor, beta 2; transforming growth factor beta-2; G-TSF; cetermin; polyergin; BSC-1 cell growth inhibitor; glioblastoma-derived T-cell suppressor factor; TGF-beta2; MGC116892;

Gene ID 7042

mRNA Refseq NM_001135599

Protein Refseq NP_001129071

MIM 190220

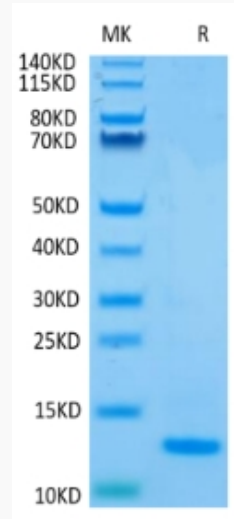
UniProt ID P61812

 Tel: 1-631-559-9269 1-516-512-3133

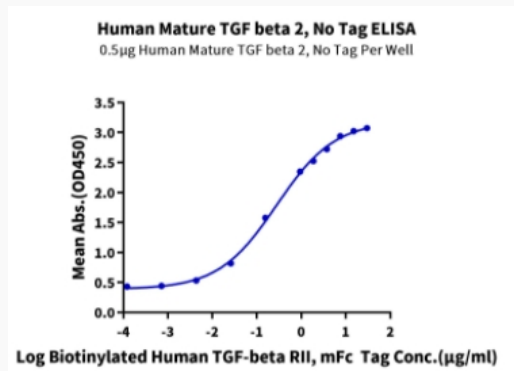
 Email: info@creative-biomart.com  Fax: 1-631-938-8127

 45-1 Ramsey Road, Shirley, NY 11967, USA

Tris-Bis PAGE



ELISA Data



Tel: 1-631-559-9269 1-516-512-3133

Email: info@creative-biomart.com Fax: 1-631-938-8127

45-1 Ramsey Road, Shirley, NY 11967, USA