

# Recombinant Full Length Human TGFB3 Protein, C-Flag-tagged

Cat. No. TGFB3-1865HFL Lot. No. (See product label)

## SPECIFICATION

### Product Overview

Recombinant Full Length Human TGFB3 Protein, fused to Flag-tag at C-terminus, was expressed in Mammalian cells.

### Species

Human

### Source

Mammalian Cells

### Description

This gene encodes a secreted ligand of the TGF-beta (transforming growth factor-beta) superfamily of proteins. Ligands of this family bind various TGF-beta receptors leading to recruitment and activation of SMAD family transcription factors that regulate gene expression. The encoded preproprotein is proteolytically processed to generate a latency-associated peptide (LAP) and a mature peptide, and is found in either a latent form composed of a mature peptide homodimer, a LAP homodimer, and a latent TGF-beta binding protein, or in an active form consisting solely of the mature peptide homodimer. The mature peptide may also form heterodimers with other TGF-beta family members. This protein is involved in embryogenesis and cell differentiation, and may play a role in wound healing. Mutations in this gene are a cause of aortic aneurysms and dissections, as well as familial arrhythmogenic right ventricular dysplasia 1.

### Form

25 mM Tris HCl, pH 7.3, 100 mM glycine, 10% glycerol.

### Molecular Mass

44.7 kDa

 Tel: 1-631-559-9269 1-516-512-3133

 Email: [info@creative-biomart.com](mailto:info@creative-biomart.com)  Fax: 1-631-938-8127

 45-1 Ramsey Road, Shirley, NY 11967, USA

<b>AA Sequence</b>	MKMHLQRALVVLALLNFATVLSLSLSTCTTLDFGHIKKRVEAIRGQILSKLRLTSPPEP TVMTHVPYQVL ALYNSTRELLEEMHGEREEGCTQENTESEYYAKEIHKFDMIQGLA EHNELAVCPKGITSKVFRFNVSSVE KNRTNLFRAEFRVLRVNPSSKRNEQRIELFQ ILRPDEHIAKQRYIGGKNLPTRGTAEWLSFDVTDTVRE WLLRRESNLGLEISIHCPCH TFQPNGDILENIHEVMEIKFKGVDNEDDHGRGDLGRLKQKDHHPHLIL MMIPPHR LDNPGQGGQRKKRALDTNYCFRNLEENCCVRPLYIDFRQDLGWKWWHEPKGYYAN FCSGPCPY LRSADTTHTSTVLGLYNTLNPEASASPCCVQDLEPLTILYYVGRTPKVE QLSNMVVKSKCS TRTRPLEQKLISEEDLAANDILDYKDDDDKV
<b>Purity</b>	> 80% as determined by SDS-PAGE and Coomassie blue staining.
<b>Stability</b>	Stable for 12 months from the date of receipt of the product under proper storage and handling conditions. Avoid repeated freeze-thaw cycles.
<b>Storage</b>	Store at -80 centigrade.
<b>Concentration</b>	>50 ug/mL as determined by microplate BCA method.
<b>Preparation</b>	Recombinant protein was captured through anti-DDK affinity column followed by conventional chromatography steps.
<b>Protein Families</b>	Druggable Genome, Secreted Protein, Transmembrane
<b>Protein Pathways</b>	Cell cycle, Chronic myeloid leukemia, Colorectal cancer, Cytokine-cytokine receptor interaction, Dilated cardiomyopathy, Hypertrophic cardiomyopathy (HCM), MAPK signaling pathway, Pancreatic cancer, Pathways in cancer, Renal cell carcinoma, TGF-beta signaling pathway
<b>Full Length</b>	Full L.

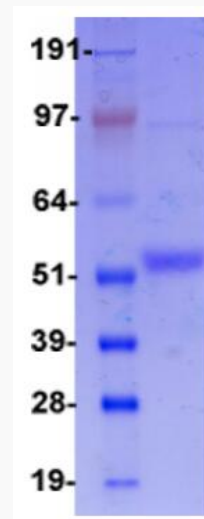
 Tel: 1-631-559-9269 1-516-512-3133

 Email: [info@creative-biomart.com](mailto:info@creative-biomart.com)  Fax: 1-631-938-8127

 45-1 Ramsey Road, Shirley, NY 11967, USA

## GENE INFORMATION

<b>Gene Name</b>	TGFB3 transforming growth factor beta 3 [ Homo sapiens (human) ]
<b>Official Symbol</b>	TGFB3
<b>Synonyms</b>	ARVD; LDS5; RNHF; ARVD1; TGF-beta3
<b>Gene ID</b>	7043
<b>mRNA Refseq</b>	NM_003239.5
<b>Protein Refseq</b>	NP_003230.1
<b>MIM</b>	190230
<b>UniProt ID</b>	P10600



Tel: 1-631-559-9269 1-516-512-3133

Email: [info@creative-biomart.com](mailto:info@creative-biomart.com) Fax: 1-631-938-8127

45-1 Ramsey Road, Shirley, NY 11967, USA



Coomassie blue staining of purified TGFB3 protein.

 Tel: 1-631-559-9269 1-516-512-3133

 Email: [info@creative-biomart.com](mailto:info@creative-biomart.com)  Fax: 1-631-938-8127

 45-1 Ramsey Road, Shirley, NY 11967, USA