

## Recombinant Human TGFB3 protein, Avi-tagged, Biotinylated

Cat. No. TGFB3-600HB Lot. No. (See product label)

### SPECIFICATION

|                          |   |
|--------------------------|---|
| <b>Product Overview</b>  | Biotinylated Recombinant Human TGFB3 protein(P10600-1)(Ala301-Ser412), fused with C-terminal Avi tag, was expressed in HEK293.      |
| <b>Species</b>           | Human   |
| <b>Source</b>            | C-Avi   |
| <b>ProteinLength</b>     | Ala301-Ser412   |
| <b>Tag</b>               | C-Avi   |
| <b>Conjugation/Label</b> | Biotin  |
| <b>Form</b>              | Lyophilized from 0.22µm filtered solution in 4mM HCl. Normally 8% trehalose is added as protectant before lyophilization.           |
| <b>Bio-activity</b>      | TG3-HM00MB  |
| <b>Molecular Mass</b>    | The protein has a predicted MW of 14.53 kDa. Due to glycosylation, the protein migrates to 15-20 kDa based on Tris-Bis PAGE result. |
| <b>Endotoxin</b>         | Less than 1EU per µg by the LAL method.   |
| <b>Purity</b>            | > 95% as determined by Tris-Bis PAGE.   |

 Tel: 1-631-559-9269 1-516-512-3133

 Email: [info@creative-biomart.com](mailto:info@creative-biomart.com)  Fax: 1-631-938-8127

 45-1 Ramsey Road, Shirley, NY 11967, USA

**Storage** Reconstituted protein stable at -80°C for 12 months, 4°C for 1 week. Use a manual defrost freezer and avoid repeated freeze-thaw cycles.

**Reconstitution** Centrifuge tubes before opening. Reconstituting to a concentration more than 100 µg/ml is recommended. Dissolve the lyophilized protein in 4mM HCl.

**Conjugation** Biotin

## GENE INFORMATION

**Gene Name** TGFB3 transforming growth factor, beta 3 [ Homo sapiens ]

**Official Symbol** TGFB3

**Synonyms** TGFB3; transforming growth factor, beta 3; transforming growth factor beta-3; TGF-beta-3; ARVD; TGF-beta3; FLJ16571;

**Gene ID** 7043

**mRNA Refseq** NM\_003239

**Protein Refseq** NP\_003230

**MIM** 190230

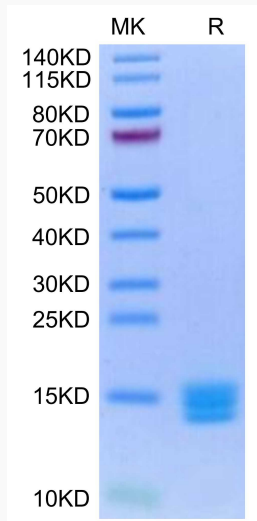
**UniProt ID** P10600

 Tel: 1-631-559-9269 1-516-512-3133

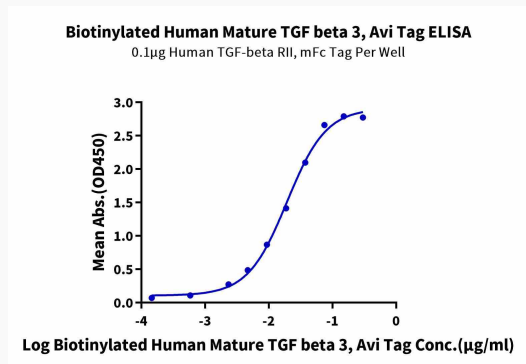
 Email: [info@creative-biomart.com](mailto:info@creative-biomart.com)  Fax: 1-631-938-8127


 45-1 Ramsey Road, Shirley, NY 11967, USA

**Tris-Bis PAGE**



**ELISA**



 Tel: 1-631-559-9269 1-516-512-3133

 Email: [info@creative-biomart.com](mailto:info@creative-biomart.com)  Fax: 1-631-938-8127

 45-1 Ramsey Road, Shirley, NY 11967, USA