

## Recombinant Human TGFBI protein, His-tagged

**Cat. No.** TGFBI-210H    **Lot. No.** (See product label)

### SPECIFICATION

<b>Product Overview</b>	Recombinant Human TGFBI protein(NP_000349.1)(Met 1-His 683) was expressed in HEK293, fused with a polyhistidine tag at the C-terminus.
<b>Species</b>	Human
<b>Source</b>	HEK293
<b>ProteinLength</b>	1-683 aa
<b>Form</b>	Lyophilized from sterile PBS, pH 7.4.
<b>Molecular Mass</b>	The secreted recombinant human beta IG-H3 comprises 671 amino acids with a predicted molecular mass of 74 kDa. As a result of glycosylation, the apparent molecular mass of rh beta IG-H3 is approximately 65 kDa in SDS-PAGE under reducing conditions.
<b>Endotoxin</b>	< 1.0 EU per µg protein as determined by the LAL method.
<b>Purity</b>	> 75 % as determined by SDS-PAGE
<b>Storage</b>	Store it under sterile conditions at -20°C to -80°C upon receiving. Recommend to aliquot the protein into smaller quantities for optimal storage. Avoid repeated freeze-thaw cycles.
<b>Reconstitution</b>	It is recommended that sterile water be added to the vial to prepare a stock solution of

 Tel: 1-631-559-9269    1-516-512-3133

 Email: [info@creative-biomart.com](mailto:info@creative-biomart.com)     Fax: 1-631-938-8127

 45-1 Ramsey Road, Shirley, NY 11967, USA

0.2 ug/ul. Centrifuge the vial at 4°C before opening to recover the entire contents.

## GENE INFORMATION

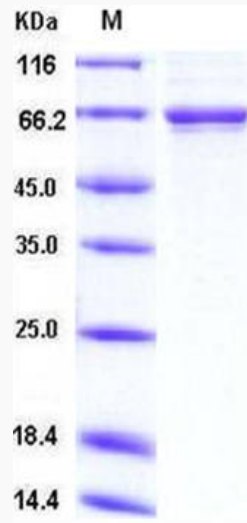
<b>Gene Name</b>	TGFBI transforming growth factor, beta-induced, 68kDa [ Homo sapiens ]
<b>Official Symbol</b>	TGFBI
<b>Synonyms</b>	TGFBI; transforming growth factor, beta-induced, 68kDa; CSD1, CSD2, CSD3, LCD1, transforming growth factor, beta induced, 68kD; transforming growth factor-beta-induced protein ig-h3; BIGH3; CDB1; CDGG1; RGD-CAP; beta ig-h3; kerato-epithelin; RGD-containing collagen-associated protein; CSD; CDG2; CSD1; CSD2; CSD3; EBMD; LCD1;
<b>Gene ID</b>	7045
<b>mRNA Refseq</b>	NM_000358
<b>Protein Refseq</b>	NP_000349
<b>MIM</b>	601692
<b>UniProt ID</b>	Q15582

 Tel: 1-631-559-9269 1-516-512-3133

 Email: [info@creative-biomart.com](mailto:info@creative-biomart.com)  Fax: 1-631-938-8127

 45-1 Ramsey Road, Shirley, NY 11967, USA

**SDS-PAGE**



 Tel: 1-631-559-9269 1-516-512-3133

 Email: [info@creative-biomart.com](mailto:info@creative-biomart.com)  Fax: 1-631-938-8127

 45-1 Ramsey Road, Shirley, NY 11967, USA