

# Recombinant Full Length Human TGFBI Protein, C-Flag-tagged

Cat. No. TGFBI-924HFL    Lot. No. (See product label)

## SPECIFICATION

<b>Product Overview</b>	Recombinant Full Length Human TGFBI Protein, fused to Flag-tag at C-terminus, was expressed in Mammalian cells.
<b>Species</b>	Human
<b>Source</b>	Mammalian Cells
<b>Description</b>	This gene encodes an RGD-containing protein that binds to type I, II and IV collagens. The RGD motif is found in many extracellular matrix proteins modulating cell adhesion and serves as a ligand recognition sequence for several integrins. This protein plays a role in cell-collagen interactions and may be involved in endochondrial bone formation in cartilage. The protein is induced by transforming growth factor-beta and acts to inhibit cell adhesion. Mutations in this gene are associated with multiple types of corneal dystrophy.
<b>Form</b>	25 mM Tris HCl, pH 7.3, 100 mM glycine, 10% glycerol.
<b>Molecular Mass</b>	72.4 kDa
<b>AA Sequence</b>	MALFVRLALALALALGPAATLAGPAKSPYQLVLQHSRLRGRQHGPNVCAVQKVIGT NRKYFTNCKQWYQ RKICGKSTVISYECCPGYEKVPGEKGC PAALPLSNLYETLGVV GSTTTQLYTDRTEKLRPEMEGPGSFTI FAPSNEAWASLPAEVLDSLVSNNVNIELLNA LRYHMGVRRVLTDELKHGMLTSMYQNSNIQIHHYPNGIV TVNCARLLKADHHATN GVVHLIDKVISTITNNIQQIIEIDTFETLRAAVAASGLNTMLEGNGQYTLLAP TNEAFE KIPSETLNRILGDPEALRDLLNNHILKSAMCAEIVAGLSVETLEGTTLEVGCSGDMLT

 Tel: 1-631-559-9269    1-516-512-3133

 Email: [info@creative-biomart.com](mailto:info@creative-biomart.com)     Fax: 1-631-938-8127

 45-1 Ramsey Road, Shirley, NY 11967, USA

INGKA IISNKDILATNGVIHYIDELLIPDSAKTLFELAAESDVSTAILFRQAGLGNHLSG  
 SERLTLAPLNSVF KDGTPPIDAHRNLLRNHIIKDQLASKYLYHGQTLETGGKCLR  
 VFVYRNSLCIENS CIAAHDKRGRYGT LFTMDRVLT PPMGTVM DVLKGDNRFSMLVA  
 AIQSAGLTETLNREGVYTVFAPTNEAFRALPPRERSRLG DAKELANILKYHIGDEILV  
 SGGIGALVRLKSLQGDKLEVSLKNNVSVNKEPVAEPDIMATNGVVHVITN  
 VLQPPANRPQERGDLEADSALEIFKQASAFSRASQRSVRLAPVYQKLLERMKHTRT  
 RPLEQKLISEEDLAANDILDYKDDDDKV

**Purity** > 80% as determined by SDS-PAGE and Coomassie blue staining.

**Stability** Stable for 12 months from the date of receipt of the product under proper storage and handling conditions. Avoid repeated freeze-thaw cycles.

**Storage** Store at -80 centigrade.

**Concentration** >50 ug/mL as determined by microplate BCA method.

**Preparation** Recombinant protein was captured through anti-DDK affinity column followed by conventional chromatography steps.

**Protein Families** Druggable Genome, Secreted Protein, Transmembrane

**Full Length** Full L.

## GENE INFORMATION

**Gene Name** [TGFB1 transforming growth factor beta induced \[ Homo sapiens \(human\) \]](#)

**Official Symbol** [TGFB1](#)

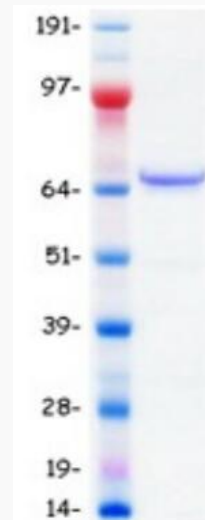
**Synonyms** CSD; CDB1; CDG2; CSD1; CSD2; CSD3; EBMD; LCD1; BIGH3; CDGG1

 Tel: 1-631-559-9269 1-516-512-3133

 Email: [info@creative-biomart.com](mailto:info@creative-biomart.com)  Fax: 1-631-938-8127

 45-1 Ramsey Road, Shirley, NY 11967, USA

Gene ID	7045
mRNA Refseq	NM_000358.3
Protein Refseq	NP_000349.1
MIM	601692
UniProt ID	Q15582



Coomassie blue staining of purified TGFBI protein.

Tel: 1-631-559-9269 1-516-512-3133

Email: [info@creative-biomart.com](mailto:info@creative-biomart.com) Fax: 1-631-938-8127

45-1 Ramsey Road, Shirley, NY 11967, USA