

Recombinant Human TGFBR1 Protein (Leu34-Glu125), N-His tagged

Cat. No. TGFBR1-6434H Lot. No. (See product label)

SPECIFICATION

Product Overview	Recombinant human TGFBR1 (Leu34-Glu125) fused with the N-His tag was expressed in E. coli.
Species	Human
Source	E.coli
ProteinLength	Leu34-Glu125
Form	Lyophilized powder/frozen liquid
Molecular Mass	12.34 kDa
Purity	> 90 % as determined by SDS-PAGE
Notes	For research use only.
Storage	Use a manual defrost freezer and avoid repeated freeze thaw cycles. Store at 2 to 8 centigrade for one week. Store at -20 to -80 centigrade for twelve months from the date of receipt.
Storage Buffer	0.01M PBS, pH 7.4, 0.02 % NLS
Reconstitution	Reconstitute in sterile water for a stock solution.

 Tel: 1-631-559-9269 1-516-512-3133

 Email: info@creative-biomart.com  Fax: 1-631-938-8127

 45-1 Ramsey Road, Shirley, NY 11967, USA

Shipping They are shipped out with dry ice/blue ice unless customers require otherwise.

GENE INFORMATION

Gene Name TGFBR1 transforming growth factor, beta receptor 1 [Homo sapiens (human)]

Official Symbol TGFBR1

Synonyms TGFBR1; transforming growth factor, beta receptor 1; transforming growth factor, beta receptor I (activin A receptor type II like kinase, 53kD); TGF-beta receptor type-1; activin A receptor type II like kinase; 53kDa; ACVRLK4; ALK 5; tbetaR-I; TGF-beta receptor type I; TGF-beta type I receptor; activin receptor-like kinase 5; transforming growth factor beta receptor I; serine/threonine-protein kinase receptor R4; activin A receptor type II-like kinase, 53kD; activin A receptor type II-like kinase, 53kDa; transforming growth factor-beta receptor type I; activin A receptor type II-like protein kinase of 53kD; transforming growth factor, beta receptor I (activin A receptor type II-like kinase, 53kD); AAT5; ALK5; MSSE; SKR4; ALK-5; LDS1A; LDS2A; TGFR-1;

Gene ID 7046

mRNA Refseq NM_001130916

Protein Refseq NP_001124388

MIM 190181

UniProt ID P36897

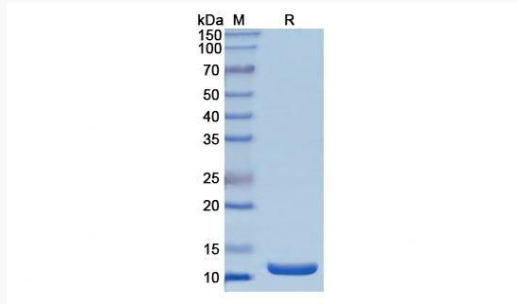
 Tel: 1-631-559-9269 1-516-512-3133

 Email: info@creative-biomart.com  Fax: 1-631-938-8127

 45-1 Ramsey Road, Shirley, NY 11967, USA



SDS-PAGE



Tel: 1-631-559-9269 1-516-512-3133

Email: info@creative-biomart.com Fax: 1-631-938-8127

45-1 Ramsey Road, Shirley, NY 11967, USA