

Recombinant Human TGFBR2 protein, hFc-tagged

Cat. No. TGFBR2-173H Lot. No. (See product label)

SPECIFICATION

Product Overview	Recombinant Human TGFBR2 protein(P37173-1)(Ile24-Asp159), fused with N-terminal hFc tag, was expressed in HEK293.
Species	Human
Source	HEK293
ProteinLength	Ile24-Asp159
Tag	N-hFc
Form	Lyophilized from 0.22µm filtered solution in PBS (pH 7.4). Normally 5% trehalose is added as protectant before lyophilization.
Bio-activity	Immobilized Human Mature TGF beta 1, No Tag at 1ug/ml (100ul/well) on the plate. Dose response curve for Human TGF-beta RII, hFc Tag with the EC50 of 11.0ng/ml determined by ELISA.
Molecular Mass	The protein has a predicted MW of 44.2 kDa. Due to glycosylation, the protein migrates to 50-68 kDa based on Tris-Bis PAGE result.
Endotoxin	Less than 1EU per µg by the LAL method.
Purity	> 95% as determined by Tris-Bis PAGE;> 95% as determined by HPLC

 Tel: 1-631-559-9269 1-516-512-3133

 Email: info@creative-biomart.com  Fax: 1-631-938-8127

 45-1 Ramsey Road, Shirley, NY 11967, USA

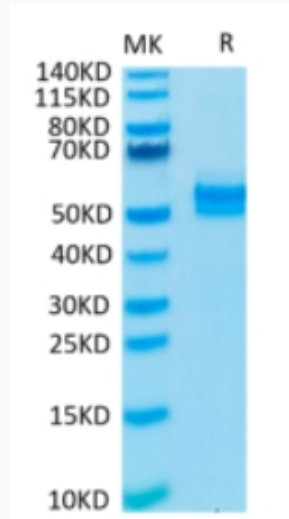
Storage	Reconstituted protein stable at -80°C for 12 months, 4°C for 1 week. Use a manual defrost freezer and avoid repeated freeze-thaw cycles.
Reconstitution	Centrifuge tubes before opening. Reconstituting to a concentration more than 100 µg/ml is recommended. Dissolve the lyophilized protein in distilled water.
GENE INFORMATION	
Gene Name	TGFBR2 transforming growth factor, beta receptor II (70/80kDa) [Homo sapiens]
Official Symbol	TGFBR2
Synonyms	TGFBR2; transforming growth factor, beta receptor II (70/80kDa); MFS2, transforming growth factor, beta receptor II (70 80kD); TGF-beta receptor type-2; tbetaR-II; TGF-beta receptor type II; TGF-beta type II receptor; TGF-beta receptor type IIB; transforming growth factor-beta receptor type II; transforming growth factor beta receptor type IIC; transforming growth factor, beta receptor II (70/80kDa) isoform 1; transforming growth factor, beta receptor II (70/80kDa) isoform 2; AAT3; FAA3; MFS2; RIIC; LDS1B; LDS2B; TAAD2; TGFR-2; TGFbeta-RII;
Gene ID	7048
mRNA Refseq	NM_001024847
Protein Refseq	NP_001020018
MIM	190182
UniProt ID	P37173

 Tel: 1-631-559-9269 1-516-512-3133

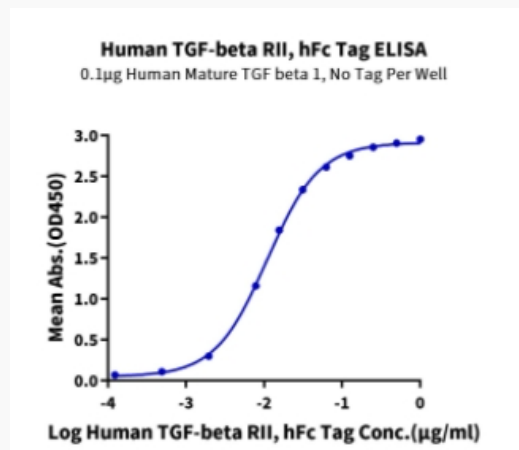
 Email: info@creative-biomart.com  Fax: 1-631-938-8127

 45-1 Ramsey Road, Shirley, NY 11967, USA

Tris-Bis PAGE



ELISA Data



 Tel: 1-631-559-9269 1-516-512-3133

 Email: info@creative-biomart.com  Fax: 1-631-938-8127

 45-1 Ramsey Road, Shirley, NY 11967, USA