

Recombinant Human TGFBR2 Protein (Thr23-Asp159), C-Fc tagged

Cat. No. TGFBR2-6435H Lot. No. (See product label)

SPECIFICATION

Product Overview	Recombinant human TGF β R2 (Thr23-Asp159) fused with the C-terminal Fc tag was expressed in mammalian cells.
Species	Human
Source	Mammalian Cells
ProteinLength	Thr23-Asp159
Form	Lyophilized powder/frozen liquid
Molecular Mass	40.07 kDa
Purity	> 90 % as determined by SDS-PAGE
Notes	For research use only.
Storage	Use a manual defrost freezer and avoid repeated freeze thaw cycles. Store at 2 to 8 centigrade for one week. Store at -20 to -80 centigrade for twelve months from the date of receipt.
Storage Buffer	Supplied as solution form in PBS or lyophilized from PBS.
Reconstitution	Reconstitute in sterile water for a stock solution.

 Tel: 1-631-559-9269 1-516-512-3133

 Email: info@creative-biomart.com  Fax: 1-631-938-8127

 45-1 Ramsey Road, Shirley, NY 11967, USA

Shipping They are shipped out with dry ice/blue ice unless customers require otherwise.

GENE INFORMATION

Gene Name TGFBR2 transforming growth factor, beta receptor II (70/80kDa) [Homo sapiens (human)]

Official Symbol TGFBR2

Synonyms TGFBR2; transforming growth factor, beta receptor II (70/80kDa); MFS2, transforming growth factor, beta receptor II (70 80kD); TGF-beta receptor type-2; tbetaR-II; TGF-beta receptor type II; TGF-beta type II receptor; TGF-beta receptor type IIB; transforming growth factor-beta receptor type II; transforming growth factor beta receptor type IIC; transforming growth factor, beta receptor II (70/80kDa) isoform 1; transforming growth factor, beta receptor II (70/80kDa) isoform 2; AAT3; FAA3; MFS2; RIIC; LDS1B; LDS2B; TAAD2; TGFR-2; TGFbeta-RII;

Gene ID 7048

mRNA Refseq NM_001024847

Protein Refseq NP_001020018

MIM 190182

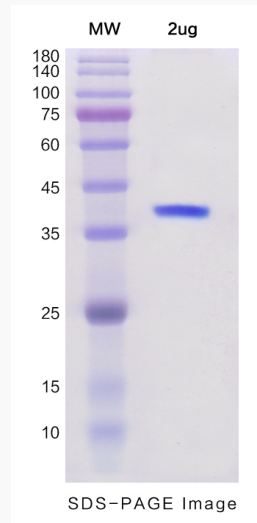
UniProt ID P37173

 Tel: 1-631-559-9269 1-516-512-3133

 Email: info@creative-biomart.com  Fax: 1-631-938-8127

 45-1 Ramsey Road, Shirley, NY 11967, USA

SDS-PAGE



 Tel: 1-631-559-9269 1-516-512-3133

 Email: info@creative-biomart.com  Fax: 1-631-938-8127

 45-1 Ramsey Road, Shirley, NY 11967, USA