

Recombinant Full Length Human TGFBR2 Protein, C-Flag-tagged

Cat. No. TGFBR2-909HFL **Lot. No.** (See product label)

SPECIFICATION

| | |
|-------------------------|---|
| Product Overview | Recombinant Full Length Human TGFBR2 Protein, fused to Flag-tag at C-terminus, was expressed in Mammalian cells. |
| Species | Human |
| Source | Mammalian Cells |
| Description | The protein encoded by this gene is a transmembrane protein that has a protein kinase domain, forms a heterodimeric complex with TGF-beta receptor type-1, and binds TGF-beta. This receptor/ligand complex phosphorylates proteins, which then enter the nucleus and regulate the transcription of genes related to cell proliferation, cell cycle arrest, wound healing, immunosuppression, and tumorigenesis. Mutations in this gene have been associated with Marfan Syndrome, Loeys-Deitz Aortic Aneurysm Syndrome, and the development of various types of tumors. Alternatively spliced transcript variants encoding different isoforms have been characterized. |
| Form | 25 mM Tris HCl, pH 7.3, 100 mM glycine, 10% glycerol. |
| Molecular Mass | 62 kDa |
| AA Sequence | MGRGLLRGLWPLHIVLWTRIASTIPPHVQKSVNNDMIVTDNNGAVKFPQLCKFCDVR FSTCDNQKSCMSN CSITSICEKPQEVCAVWRKNDENITLETVCHDPKLPYHDFILE DAASPKCIMKEKKKPGETFFMCSCSS DECNDNIIFSEEYNTSNPDLVVIFQVTGISL LPPLGVAISVIIIIFYCYRVNRQQKLSSTWETGKTRKLM EFSEHCAIILED RSDISSTC |

 Tel: 1-631-559-9269 1-516-512-3133

 Email: info@creative-biomart.com  Fax: 1-631-938-8127

 45-1 Ramsey Road, Shirley, NY 11967, USA

ANNINHNTPELLPIELDTLVGKGRFAEVYKAKLKQNTSEQFETVAVKIFP YEEYASWKT
 EKDIFSDINLKHENILQFLTAERKTELGKQYWLITAFHAKGNLQEYLTRHVISWEDLR
 KL GSSLARGIAHLHSDHTPCGRPKMPIVHRDLKSSNILVKNDLTCCCLCDFGLSLRLD
 PTLSVDDLANSQVG TARYMAPEVLESRMNLENVESFKQTDVYSMALVLWEMTSR
 CNAVGEVKDYEPFPGSKVREHPCVESMKDN VLRDRGRPEIPSFWLNHQGIQMVCE
 TLTECWDHDPEARLTAQCVAERFSELEHLDRLSGRSCSEEKIPED
 GSLNTTKSGPTRTRRLEQKLISEEDLAANDILDYKDDDDKV

Purity > 80% as determined by SDS-PAGE and Coomassie blue staining.

Stability Stable for 12 months from the date of receipt of the product under proper storage and handling conditions. Avoid repeated freeze-thaw cycles.

Storage Store at -80 centigrade.

Concentration >50 ug/mL as determined by microplate BCA method.

Preparation Recombinant protein was captured through anti-DDK affinity column followed by conventional chromatography steps.

Protein Families Druggable Genome, Protein Kinase, Transmembrane

Protein Pathways Adherens junction, Chronic myeloid leukemia, Colorectal cancer, Cytokine-cytokine receptor interaction, Endocytosis, MAPK signaling pathway, Pancreatic cancer, Pathways in cancer, TGF-beta signaling pathway


Full Length Full L.

GENE INFORMATION

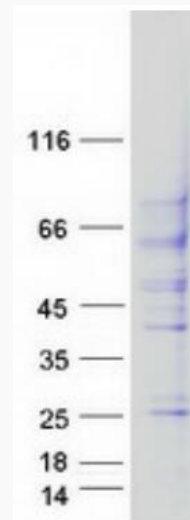
Gene Name [TGFR2 transforming growth factor beta receptor 2 \[Homo sapiens \(human\) \]](#)

 Tel: 1-631-559-9269 1-516-512-3133

 Email: info@creative-biomart.com  Fax: 1-631-938-8127

 45-1 Ramsey Road, Shirley, NY 11967, USA


| | |
|------------------------|--|
| Official Symbol | TGFBR2 |
| Synonyms | AAT3; FAA3; LDS2; MFS2; RIIC; LDS1B; LDS2B; TAAD2; TBR1I; TBR-ii; TGFR-2; tbetaR-II; TGFbeta-R1I |
| Gene ID | 7048 |
| mRNA Refseq | NM_003242.6 |
| Protein Refseq | NP_003233.4 |
| MIM | 190182 |
| UniProt ID | P37173 |



Coomassie blue staining of purified TGFBR2 protein.

 Tel: 1-631-559-9269 1-516-512-3133

 Email: info@creative-biomart.com  Fax: 1-631-938-8127

 45-1 Ramsey Road, Shirley, NY 11967, USA