

# Recombinant Full Length Human TGM1 Protein, C-Flag-tagged

Cat. No. TGM1-1420HFL Lot. No. (See product label)

## SPECIFICATION

<b>Product Overview</b>	Recombinant Full Length Human TGM1 Protein, fused to Flag-tag at C-terminus, was expressed in Mammalian cells.
<b>Species</b>	Human
<b>Source</b>	Mammalian Cells
<b>Description</b>	The protein encoded by this gene is a membrane protein that catalyzes the addition of an alkyl group from an alkylamine to a glutamine residue of a protein, forming an alkylglutamine in the protein. This protein alkylation leads to crosslinking of proteins and catenation of polyamines to proteins. This gene contains either one or two copies of a 22 nt repeat unit in its 3' UTR. Mutations in this gene have been associated with autosomal recessive lamellar ichthyosis (LI) and nonbullous congenital ichthyosiform erythroderma (NCIE).
<b>Form</b>	25 mM Tris HCl, pH 7.3, 100 mM glycine, 10% glycerol.
<b>Molecular Mass</b>	89.6 kDa
<b>AA Sequence</b>	MMDGPRSDVGRWGGNPLQPPTTPSPEPEPEPDGRSRRGGGRSFWARCCGCCSC RNAADDDWGPEPSDSRG RGSSSGTRRPGSRGSDSRRPVSRGSGVNAAGDGTIR EGMLVVNGVDLLSSRSDQNRREHHTDEYEYDELI VRRGQPFHMLLLSRTYESSDR ITLELLIGNNPEVGKGVTHIIPVVGKGGSGGWKAQVVKASGQNLNLRVH TSPNAIIGKF QFTVRTQSDAGEFQLPFDPRNEIYILFNPWCPEDIVYVDHEDWRQEYVLNESGRIYY GTE AQIGERTWNYGQFDHGVLDAclyILDRRGMPYGGRGDPVNVSRVISAMVNSL

Tel: 1-631-559-9269 1-516-512-3133

Email: [info@creative-biomart.com](mailto:info@creative-biomart.com) Fax: 1-631-938-8127

45-1 Ramsey Road, Shirley, NY 11967, USA

DDNGVLIGNWSGDYSRGT NPSAWVGSVEILLSYLRTGYSVPYGGCWFAGVTTTTV  
 LRCLGLATRTVTNFNSAHD TDTSLTMDIYFDEN MKPLEHLNHDSVWNFHVWDCW  
 MKRPDLPSGFDGWQVVDATPQETSSGIFCCGPCSVESIKNGLVYMKYD TPFIFAEV  
 NSDKVYWQRQDDGSFKIVYVEEKAIGTLIVTKAISSNMREDITYLYKHPEGSDAERKA  
 VETA AAHGSKPNVYANRGS AEDVAMQVEAQDAVMGQDLMVSVMLINHSSSRRTV  
 KLHLYLSVTFTYTGVS GTIFK ETKKEVELAPGASDRVTMPVAYKEYRPHLVDQGAMLL  
 NVSGHVKESGQVLAKQHTFRLRTPDLSL TLLGA AVVGQECEVQIVFKNPLPVTLTNV  
 VFRLEGSGLQRPKILNVGDIGGNETVTLRQSFVPRPGPRQLIASL  
 DSPQLSQVHGVIQVDVAPAPGDGGFFSDAGGDSHLGETIPMASRGGATRTRPLEQ  
 KLISEEDLAANDILDYKDDDDKV

<b>Purity</b>	> 80% as determined by SDS-PAGE and Coomassie blue staining.
<b>Stability</b>	Stable for 12 months from the date of receipt of the product under proper storage and handling conditions. Avoid repeated freeze-thaw cycles.
<b>Storage</b>	Store at -80 centigrade.
<b>Concentration</b>	>50 ug/mL as determined by microplate BCA method.
<b>Preparation</b>	Recombinant protein was captured through anti-DDK affinity column followed by conventional chromatography steps.
<b>Protein Families</b>	Druggable Genome
<b>Full Length</b>	Full L.

## GENE INFORMATION

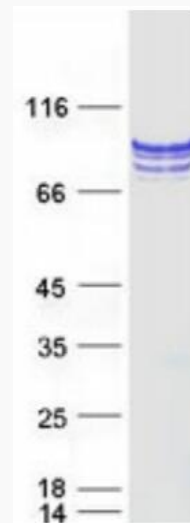
**Gene Name** TGM1 transglutaminase 1 [ Homo sapiens (human) ]

 Tel: 1-631-559-9269 1-516-512-3133

 Email: [info@creative-biomart.com](mailto:info@creative-biomart.com)  Fax: 1-631-938-8127

 45-1 Ramsey Road, Shirley, NY 11967, USA

<b>Official Symbol</b>	TGM1
<b>Synonyms</b>	LI; KTG; LI1; TGK; ICR2; ARCI1; TGASE
<b>Gene ID</b>	7051
<b>mRNA Refseq</b>	NM_000359.3
<b>Protein Refseq</b>	NP_000350.1
<b>MIM</b>	190195
<b>UniProt ID</b>	P22735



Coomassie blue staining of purified TGM1 protein.

 Tel: 1-631-559-9269 1-516-512-3133

 Email: [info@creative-biomart.com](mailto:info@creative-biomart.com)  Fax: 1-631-938-8127

 45-1 Ramsey Road, Shirley, NY 11967, USA