

## Recombinant Human TGM2 Protein, His-tagged

Cat. No. TGM2-008H Lot. No. (See product label)

### SPECIFICATION

<b>Product Overview</b>	Recombinant full length human TGM2 protein (2-687) with a N-terminally His tag was expressed in E. coli.
<b>Species</b>	Human
<b>Source</b>	E.coli
<b>ProteinLength</b>	2-687
<b>Description</b>	<p>Transglutaminases are enzymes that catalyze the crosslinking of proteins by epsilon-gamma glutamyl lysine isopeptide bonds. While the primary structure of transglutaminases is not conserved, they all have the same amino acid sequence at their active sites and their activity is calcium-dependent. The protein encoded by this gene acts as a monomer, is induced by retinoic acid, and appears to be involved in apoptosis. Finally, the encoded protein is the autoantigen implicated in celiac disease. Two transcript variants encoding different isoforms have been found for this gene.</p>
<b>Form</b>	50 mM HEPES, pH 7.2, with 150 mM sodium chloride, 1 mM DTT, 1 mM EDTA, and 10% glycerol
<b>Molecular Mass</b>	79.4 kDa
<b>Purity</b>	≥90% estimated by SDS-PAGE
<b>Stability</b>	≥ 545 days

 Tel: 1-631-559-9269 1-516-512-3133

 Email: [info@creative-biomart.com](mailto:info@creative-biomart.com)  Fax: 1-631-938-8127

 45-1 Ramsey Road, Shirley, NY 11967, USA

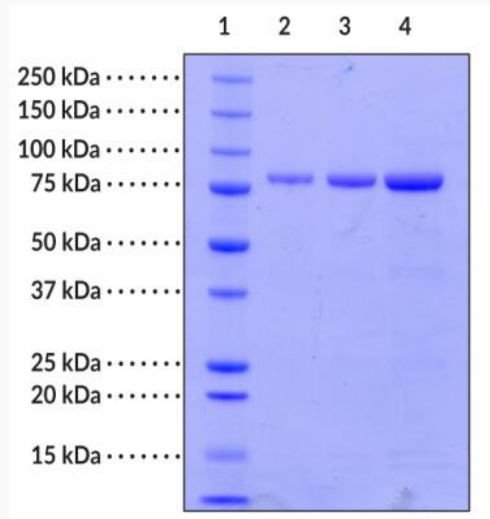
<b>Storage</b>	Store at -80 centigrade
<b>Shipping</b>	Dry ice in continental US; may vary elsewhere
<b>GENE INFORMATION</b>	
<b>Gene Name</b>	TGM2 transglutaminase 2 [ Homo sapiens (human) ]
<b>Official Symbol</b>	TGM2
<b>Synonyms</b>	TGM2; transglutaminase 2; TGC; TG(C); protein-glutamine gamma-glutamyltransferase 2; C polypeptide, protein-glutamine-gamma-glutamyltransferase; TGase C; TGase H; TGase-2; tissue transglutaminase; transglutaminase C; transglutaminase H; EC 2.3.2.13
<b>Gene ID</b>	7052
<b>mRNA Refseq</b>	NM_001323316
<b>Protein Refseq</b>	NP_001310245
<b>MIM</b>	190196
<b>UniProt ID</b>	P21980

 Tel: 1-631-559-9269 1-516-512-3133

 Email: [info@creative-biomart.com](mailto:info@creative-biomart.com)  Fax: 1-631-938-8127

 45-1 Ramsey Road, Shirley, NY 11967, USA

**SDS-PAGE analysis  
of TGM2.**



Lane 1: MW Markers  
Lane 2: TGM2 (1 g)  
Lane 3: TGM2 (2 g)  
Lane 4: TGM2 (4 g)

 Tel: 1-631-559-9269 1-516-512-3133

 Email: [info@creative-biomart.com](mailto:info@creative-biomart.com)  Fax: 1-631-938-8127

 45-1 Ramsey Road, Shirley, NY 11967, USA