

## Recombinant Human TGM2 protein, His-tagged

Cat. No. TGM2-922H Lot. No. (See product label)

### SPECIFICATION

<b>Product Overview</b>	Recombinant Human TGM2 protein(NP_004604.2) (Met 1-Ala 687) was expressed in Insect Cells, with a polyhistidine tag at the N-terminus.
<b>Species</b>	Human
<b>Source</b>	Insect Cells
<b>ProteinLength</b>	1-687 aa
<b>Form</b>	Lyophilized from sterile 50mM Tris, 100mM NaCl, 2mM DTT, 10% glycerol, pH 8.0.
<b>Molecular Mass</b>	The recombinant human TGM2 consists of 705 amino acids and has a predicted molecular mass of 79.6 kDa. It migrates as an approximately 80 kDa band in SDS-PAGE under reducing conditions as estimated.
<b>Endotoxin</b>	< 1.0 EU per µg of the protein as determined by the LAL method.
<b>Purity</b>	> 97 % as determined by SDS-PAGE
<b>Storage</b>	Store it under sterile conditions at -20°C to -80°C upon receiving. Recommend to aliquot the protein into smaller quantities for optimal storage. Avoid repeated freeze-thaw cycles.
<b>Reconstitution</b>	It is recommended that sterile water be added to the vial to prepare a stock solution of 0.2 ug/ul. Centrifuge the vial at 4°C before opening to recover the entire contents.

 Tel: 1-631-559-9269 1-516-512-3133

 Email: [info@creative-biomart.com](mailto:info@creative-biomart.com)  Fax: 1-631-938-8127

 45-1 Ramsey Road, Shirley, NY 11967, USA

<b>protein Refseq-Weblink</b>	<a href="http://www.ncbi.nlm.nih.gov/protein/NP_004604.2">http://www.ncbi.nlm.nih.gov/protein/NP_004604.2</a>
<b>Unit ID</b>	P21980
<b>Unit ID-Weblink</b>	<a href="https://www.uniprot.org/uniprotkb/P21980">https://www.uniprot.org/uniprotkb/P21980</a>

## GENE INFORMATION

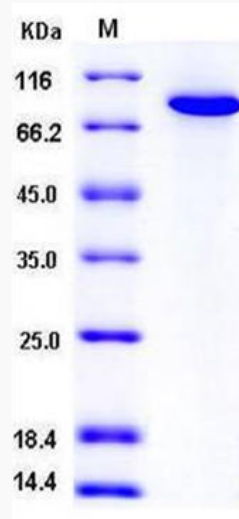
<b>Gene Name</b>	TGM2 transglutaminase 2 (C polypeptide, protein-glutamine-gamma-glutamyltransferase) [ Homo sapiens ]
<b>Official Symbol</b>	TGM2
<b>Synonyms</b>	TGM2; transglutaminase 2 (C polypeptide, protein-glutamine-gamma-glutamyltransferase); protein-glutamine gamma-glutamyltransferase 2; TGC; TG(C); TGase C; TGase H; TGase-2; TGase-H; C polypeptide; transglutaminase C; transglutaminase H; transglutaminase-2; tissue transglutaminase; protein-glutamine-gamma-glutamyltransferase; TG2; GNAH; G-ALPHA-h;
<b>Gene ID</b>	7052
<b>mRNA Refseq</b>	NM_004613
<b>protein Refseq</b>	NP_004604
<b>MIM</b>	190196

 Tel: 1-631-559-9269 1-516-512-3133

 Email: [info@creative-biomart.com](mailto:info@creative-biomart.com)  Fax: 1-631-938-8127

 45-1 Ramsey Road, Shirley, NY 11967, USA

SDS-PAGE



 Tel: 1-631-559-9269 1-516-512-3133

 Email: [info@creative-biomart.com](mailto:info@creative-biomart.com)  Fax: 1-631-938-8127

 45-1 Ramsey Road, Shirley, NY 11967, USA