

Recombinant Human TGOLN2 Protein, His-tagged

Cat. No. TGOLN2-651H Lot. No. (See product label)

SPECIFICATION

Product Overview	Recombinant Human TGOLN2(Ala22~Glu323) fused with His tag at N-terminal was expressed in E. coli.
Species	Human
Source	E.coli
ProteinLength	Ala22~Glu323
Description	This gene encodes a type I integral membrane protein that is localized to the trans-Golgi network, a major sorting station for secretory and membrane proteins. The encoded protein cycles between early endosomes and the trans-Golgi network, and may play a role in exocytic vesicle formation. Alternatively spliced transcript variants encoding multiple isoforms have been observed for this gene.
Form	PBS, pH7.4, containing 0.01% SKL, 1mM DTT, 5% Trehalose and Proclin300.
Molecular Mass	34.7kDa
Endotoxin	<1.0EU per 1g (determined by the LAL method)
Purity	> 95%
Applications	Positive Control; Immunogen; SDS-PAGE; WB. If bio-activity of the protein is needed, please check active protein.

 Tel: 1-631-559-9269 1-516-512-3133

 Email: info@creative-biomart.com  Fax: 1-631-938-8127

 45-1 Ramsey Road, Shirley, NY 11967, USA

Stability The thermal stability is described by the loss rate. The loss rate was determined by accelerated thermal degradation test, that is, incubate the protein at 37 centigrade for 48h, and no obvious degradation and precipitation were observed. The loss rate is less than 5% within the expiration date under appropriate storage condition.

Storage Avoid repeated freeze/thaw cycles. Store at 2-8 centigrade for one month. Aliquot and store at -80 centigrade for 12 months.

Reconstitution Reconstitute in PBS or others.

GENE INFORMATION

Gene Name [TGOLN2 trans-golgi network protein 2 \[Homo sapiens \]](#)

Official Symbol [TGOLN2](#)

Synonyms TGOLN2; trans-golgi network protein 2; trans-Golgi network integral membrane protein 2; TGN38; TGN46; TGN48; TGN51; trans Golgi network protein (46; 48; 51kD isoforms); TTGN2; TGN38 homolog; trans-Golgi network protein TGN51; trans-Golgi network protein (46, 48, 51kD isoforms); MGC14722;

Gene ID [10618](#)

mRNA Refseq [NM_001206840](#)

Protein Refseq [NP_001193769](#)

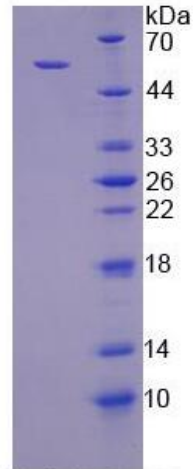
MIM [603062](#)

UniProt ID [O43493](#)

 Tel: 1-631-559-9269 1-516-512-3133

 Email: info@creative-biomart.com  Fax: 1-631-938-8127

 45-1 Ramsey Road, Shirley, NY 11967, USA



15% SDS-PAGE

Tel: 1-631-559-9269 1-516-512-3133

Email: info@creative-biomart.com Fax: 1-631-938-8127

45-1 Ramsey Road, Shirley, NY 11967, USA