

# Recombinant Full Length Human THBS1 Protein, C-Flag-tagged

Cat. No. THBS1-60HFL Lot. No. (See product label)

## SPECIFICATION

<b>Product Overview</b>	Recombinant Full Length Human THBS1 Protein, fused to Flag-tag at C-terminus, was expressed in Mammalian cells.
<b>Species</b>	Human
<b>Source</b>	Mammalian Cells
<b>Description</b>	The protein encoded by this gene is a subunit of a disulfide-linked homotrimeric protein. This protein is an adhesive glycoprotein that mediates cell-to-cell and cell-to-matrix interactions. This protein can bind to fibrinogen, fibronectin, laminin, type V collagen and integrins alpha-V/beta-1. This protein has been shown to play roles in platelet aggregation, angiogenesis, and tumorigenesis.
<b>Form</b>	25 mM Tris HCl, pH 7.3, 100 mM glycine, 10% glycerol.
<b>Molecular Mass</b>	127.4 kDa
<b>AA Sequence</b>	MGLAWGLGLVFLMHVCGTNRIPESGGDNSVFDIFELTGAARKGSGRRLVKGPDPS PAFRIEDANLIPPV PDDKFQDLVDAVRAEKGFLLASLRQMKKTRGTLALERKDHS GQVFSVVSNGKAGTLDLSLTVQGKQHV VSVEEALLATGQWKSITLFVQEDRAQLYI DCEKMENAELDVPIQSVFTRDLASIALRLIAKGGVNDNFQG VLQNVRFVFGTTPEDI LRNKGCSSTSVLLTLDNNVVNGSSPAIRTNVYIGHKTKDLQAICGISCDELSSM VLEL RGLRTIVTTLQDSIRKVTEENKELANELRRPPLCYHNGVQYRNNEEWTVDSCTECH CQNSVTICKK VSCPIMPCSNATVPDGECCPRCWPSDSADDGWSPWSEWTSCSTS

 Tel: 1-631-559-9269 1-516-512-3133

 Email: [info@creative-biomart.com](mailto:info@creative-biomart.com)  Fax: 1-631-938-8127

 45-1 Ramsey Road, Shirley, NY 11967, USA

CGNGIQQRGRSCDSLNNRCEGSSVQT RTCHIQECDKRFKQDGGWSHWSPWSSC  
 SVTCGDGVITRIRLCNSPSPQMNGKPCGEARETKACKKDACP INGGWGPWSPW  
 DICSVTCGGGVQKRSRLCNNPTPQFGGKDCVGDVTENQICNKQDCPIDGCLSNPCF  
 AGV KCTSYPDGSWKCGACPPGYSGNGIQCTDVDECKEVPDACFNHNGEHRCENT  
 DPGYNCLPCPPRFTGSQPF GQGVEHATANKQVCKPRNPCTDGTDCNKNACNY  
 LGHYSDPMYRCECKPGYAGNGIICGEDTDLDGWPN ENLVCVANATYHCKKDNCPN  
 LPNSGQEDYDKDGIGDACDDDDNDKIPDDRDNCPFHYNPAQYDYDRDDV GDRC  
 DNCOPYNHNPDQADTDNNGEGDACAADIDGDGILNERDNCQYVYNVDQRDTMDG  
 VGDQCDNCPLEH NPDQLDSDSDRIGDTCNNDIDEDGHQNNLDNCPYVPANQ  
 ADHDKDGKGDACDHDDNDGIPDDKDNC RLVPNPDQKSDSDGDRGDACKDDFD  
 HDSVPDIDDICPENVDISETDFRRFQMIPLDPKGT SQNDPNWVVR HQGKELVQTVN  
 CDPGLAVGYDEFNAVDFSGTFFINTERDDDYAGFVFGYQSSSRFYVVMWKQVTQS  
 YWDT NPTRAQGYSGLSVKVNSTTGPGEHLRNALWHTGNTPGQVRTLWHDPRHI  
 GWKDF TAYRWRLSHRPKTGF  
 IRVVMYEGKKIMADSGPIYDKTYAGGRLGLFVFSQEMVFFSDLKYECRDPTRTRPLE  
 QKLISEEDLAANDILDYKDDDDKV

<b>Purity</b>	> 80% as determined by SDS-PAGE and Coomassie blue staining.
<b>Stability</b>	Stable for 12 months from the date of receipt of the product under proper storage and handling conditions. Avoid repeated freeze-thaw cycles.
<b>Storage</b>	Store at -80 centigrade.
<b>Concentration</b>	>50 ug/mL as determined by microplate BCA method.
<b>Preparation</b>	Recombinant protein was captured through anti-DDK affinity column followed by conventional chromatography steps.
<b>Protein Families</b>	Druggable Genome

 Tel: 1-631-559-9269 1-516-512-3133

 Email: [info@creative-biomart.com](mailto:info@creative-biomart.com)  Fax: 1-631-938-8127

 45-1 Ramsey Road, Shirley, NY 11967, USA

<b>Protein Pathways</b>	Bladder cancer, ECM-receptor interaction, Focal adhesion, p53 signaling pathway, TGF-beta signaling pathway
-------------------------	---

<b>Full Length</b>	Full L.
--------------------	---------

## GENE INFORMATION

<b>Gene Name</b>	THBS1 thrombospondin 1 [ Homo sapiens (human) ]
------------------	---

<b>Official Symbol</b>	THBS1
------------------------	-------

<b>Synonyms</b>	TSP; THBS; TSP1; TSP-1; THBS-1
-----------------	--------------------------------

<b>Gene ID</b>	7057
----------------	------

<b>mRNA Refseq</b>	NM_003246.4
--------------------	-------------

<b>Protein Refseq</b>	NP_003237.2
-----------------------	-------------

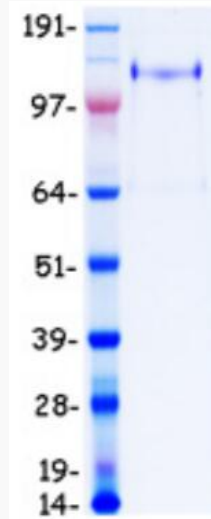
<b>MIM</b>	188060
------------	--------

<b>UniProt ID</b>	P07996
-------------------	--------

 Tel: 1-631-559-9269 1-516-512-3133

 Email: [info@creative-biomart.com](mailto:info@creative-biomart.com)  Fax: 1-631-938-8127

 45-1 Ramsey Road, Shirley, NY 11967, USA



Coomassie blue staining of purified THBS1 protein.

 Tel: 1-631-559-9269 1-516-512-3133

 Email: [info@creative-biomart.com](mailto:info@creative-biomart.com)  Fax: 1-631-938-8127

 45-1 Ramsey Road, Shirley, NY 11967, USA