

# Recombinant Human THG1L Protein, Myc/DDK-tagged, C13 and N15-labeled

Cat. No. THG1L-5807H Lot. No. (See product label)

## SPECIFICATION

### Product Overview

THG1L MS Standard C13 and N15-labeled recombinant protein (NP\_060342) with a C-terminal MYC/DDK tag, was expressed in HEK293 cells.

### Species

Human

### Source

HEK293

### Description

The protein encoded by this gene is a mitochondrial protein that is induced by high levels of glucose and is associated with diabetic nephropathy. The encoded protein appears to increase mitochondrial biogenesis, which could lead to renal fibrosis. Another function of this protein is that of a guanyltransferase, adding GMP to the 5' end of tRNA(His). Several transcript variants encoding different isoforms have been found for this gene.

### Molecular Mass

34.8 kDa

### AA Sequence

MWGACKVKVHDSLATISITLRRYLRLGATMAKSKFEYVRDFEADDTCLAHCWVVVR  
LDGRNFHRFAEKHNFAPNDSRALQLMTKCAQTVMEELEDIVIAYGQSDEYSFVFK  
RKTNWFKRRASKFMTHVASQFASSYVFYWRDYFEDQPLLYPPGFDGRVVVYPSNQ  
TLKDYLRSWRQADCHINNLNTVFWALIQQSGLTPVQAQGRLLQGTLAADKNEILFSEF  
NINYNNEPPMYRKGTVLIWQKVDEVMTKEIKLPTEMEGKKMAVTRTRTKPVPLHCDII  
GDAFWKEHPEILDEDSTRTRPLEQKLISEEDLAANDILDYKDDDDKV

### Purity

> 80% as determined by SDS-PAGE and Coomassie blue staining

 Tel: 1-631-559-9269 1-516-512-3133

 Email: [info@creative-biomart.com](mailto:info@creative-biomart.com)  Fax: 1-631-938-8127

 45-1 Ramsey Road, Shirley, NY 11967, USA

<b>Stability</b>	Stable for 3 months from receipt of products under proper storage and handling conditions.
<b>Storage</b>	Store at -80 centigrade. Avoid repeated freeze-thaw cycles.
<b>Concentration</b>	50 µg/mL as determined by BCA
<b>Storage Buffer</b>	100 mM glycine, 25 mM Tris-HCl, pH 7.3.

## GENE INFORMATION

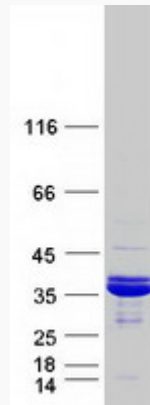
<b>Gene Name</b>	THG1L tRNA-histidine guanylyltransferase 1 like [ Homo sapiens (human) ]
<b>Official Symbol</b>	THG1L
<b>Synonyms</b>	THG1L; tRNA-histidine guanylyltransferase 1-like ( <i>S. cerevisiae</i> ); probable tRNA(His) guanylyltransferase; FLJ11601; FLJ20546; ICF45; interphase cytoplasmic foci protein 45;
<b>Gene ID</b>	54974
<b>mRNA Refseq</b>	NM_017872
<b>Protein Refseq</b>	NP_060342
<b>MIM</b>	618802
<b>UniProt ID</b>	Q9NWX6

 Tel: 1-631-559-9269 1-516-512-3133

 Email: [info@creative-biomart.com](mailto:info@creative-biomart.com)  Fax: 1-631-938-8127

 45-1 Ramsey Road, Shirley, NY 11967, USA

**SDS-PAGE**



 Tel: 1-631-559-9269 1-516-512-3133

 Email: [info@creative-biomart.com](mailto:info@creative-biomart.com)  Fax: 1-631-938-8127

 45-1 Ramsey Road, Shirley, NY 11967, USA