

Recombinant Human THOP1 Protein, Myc/DDK-tagged, C13 and N15-labeled

Cat. No. THOP1-3914H Lot. No. (See product label)

SPECIFICATION

Product Overview	THOP1 MS Standard C13 and N15-labeled recombinant protein (NP_003240) with a C-terminal MYC/DDK tag, was expressed in HEK293 cells.
Species	Human
Source	HEK293
Description	The protein encoded by this gene is a kinase that uses zinc as a cofactor. The encoded oligopeptidase cleaves cytosolic peptides, making them unavailable for display on antigen-presenting cells. This protein also cleaves neuropeptides under 20 aa in length and can degrade beta-amyloid precursor protein to amyloidogenic peptides.
Molecular Mass	78.8 kDa
AA Sequence	<p>MKPPAACAGDMADAASPCSVVNDLRWDLAQQIEERTRELIEQTKRVYDQVGTQE FEDVSYESTLKALADVEVTVQQRNILDFFQHVSPSKDIRTASTEADKKLSEFDVEMS MREDVYQRIVWLQEKVQKDSL RPEAARYLERLIKLGRRNGLHLPRETQENIKRIKKK LSLLCIDFNKLNEDTTFLPFTLQELGGLPEDFLNSLEKMEDGKLKVTLYPHYFPLL KKCHVPETRRKVEEAFNCRCKEENCAILKELVTLRAQKSRLGFGHTHADYVLEMNM AKTSQTVATFLDELAQKLKPLGEQERAVILELKRAECERRGLPFDGRIRAWDMRY MNQVEETRYCVDQNLKKEYFPVQVVTGHLGIIYQELLGLAFHHEEGASAWHEDVRL YTARDAASGEVVGKFYLDLYPREGKYGHAACFGLQPGCLRQDGSRQIAIAAMVANF</p>

 Tel: 1-631-559-9269 1-516-512-3133

 Email: info@creative-biomart.com  Fax: 1-631-938-8127

 45-1 Ramsey Road, Shirley, NY 11967, USA

TKPTADAPSLQLQHDEVETYFHEFGHVMHQLCSQAEFAMFSGTHVERDFVEAPSQM
 LENWVWEQEPLLRMSRHYRTGSAVPRELLEKLIESRQANTGLFNLRQIVLAKVDQAL
 HTQTDADPAEEYARLCQEILGVPATPGTNMPATFGHLAGGYDAQYYGYLWSEVYS
 MDMFHTRFKQEGVLNSKVGMDYRSCILRPGGSEDASAMLRFLGRDPKQDAFLLS
 KGLQVGGCEPEPQVCSGPTRTRPLEQKLISEEDLAANDILDYKDDDDKV

Purity > 80% as determined by SDS-PAGE and Coomassie blue staining

Stability Stable for 3 months from receipt of products under proper storage and handling conditions.

Storage Store at -80 centigrade. Avoid repeated freeze-thaw cycles.

Concentration 50 µg/mL as determined by BCA

Storage Buffer 100 mM glycine, 25 mM Tris-HCl, pH 7.3.

GENE INFORMATION

Gene Name THOP1 thimet oligopeptidase 1 [Homo sapiens (human)]

Official Symbol THOP1

Synonyms THOP1; thimet oligopeptidase 1; thimet oligopeptidase; endopeptidase 24.15; TOP; MP78; EP24.15; MEPD_HUMAN;

Gene ID 7064

mRNA Refseq NM_003249

Protein Refseq NP_003240

 Tel: 1-631-559-9269 1-516-512-3133

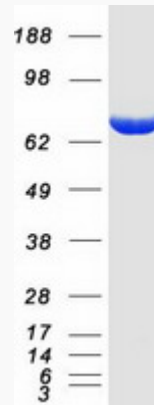
 Email: info@creative-biomart.com  Fax: 1-631-938-8127

 45-1 Ramsey Road, Shirley, NY 11967, USA

MIM 601117

UniProt ID P52888

SDS-PAGE



 Tel: 1-631-559-9269 1-516-512-3133

 Email: info@creative-biomart.com  Fax: 1-631-938-8127

 45-1 Ramsey Road, Shirley, NY 11967, USA