

Recombinant Human THOP1 Protein (Lys2-Cys689), C-His tagged

Cat. No. THOP1-6449H Lot. No. (See product label)

SPECIFICATION

Product Overview	Recombinant human THOP1 (Lys2-Cys689) fused with the C-terminal His tag was expressed in E. coli.
Species	Human
Source	E.coli
ProteinLength	Lys2-Cys689
Form	Lyophilized powder/frozen liquid
Molecular Mass	75.68 kDa
Purity	> 90 % as determined by SDS-PAGE
Notes	For research use only.
Storage	Use a manual defrost freezer and avoid repeated freeze thaw cycles. Store at 2 to 8 centigrade for one week. Store at -20 to -80 centigrade for twelve months from the date of receipt.
Storage Buffer	Supplied as solution form in PBS or lyophilized from PBS.
Reconstitution	Reconstitute in sterile water for a stock solution.

 Tel: 1-631-559-9269 1-516-512-3133

 Email: info@creative-biomart.com  Fax: 1-631-938-8127

 45-1 Ramsey Road, Shirley, NY 11967, USA

Shipping

They are shipped out with dry ice/blue ice unless customers require otherwise.

GENE INFORMATION**Gene Name**

THOP1 thimet oligopeptidase 1 [Homo sapiens (human)]

Official Symbol

THOP1

Synonyms

THOP1; thimet oligopeptidase 1; thimet oligopeptidase; endopeptidase 24.15; TOP; MP78; EP24.15; MEPD_HUMAN;

Gene ID

7064

mRNA Refseq

NM_003249

Protein Refseq

NP_003240

MIM

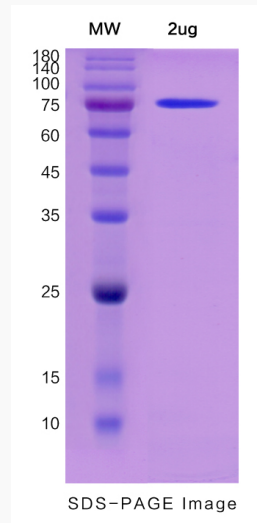
601117

UniProt ID

P52888

 Tel: 1-631-559-9269 1-516-512-3133 Email: info@creative-biomart.com  Fax: 1-631-938-8127 45-1 Ramsey Road, Shirley, NY 11967, USA

SDS-PAGE



 Tel: 1-631-559-9269 1-516-512-3133

 Email: info@creative-biomart.com  Fax: 1-631-938-8127

 45-1 Ramsey Road, Shirley, NY 11967, USA