

## Recombinant Human THOP1 Protein, His-tagged

Cat. No. THOP1-650H Lot. No. (See product label)

### SPECIFICATION

<b>Product Overview</b>	Recombinant Human THOP1(Asn451~Thr597) fused with His tag at N-terminal was expressed in E. coli.
<b>Species</b>	Human
<b>Source</b>	E.coli
<b>ProteinLength</b>	Asn451~Thr597
<b>Description</b>	The protein encoded by this gene is a kinase that uses zinc as a cofactor. The encoded oligopeptidase cleaves cytosolic peptides, making them unavailable for display on antigen-presenting cells. This protein also cleaves neuropeptides under 20 aa in length and can degrade beta-amyloid precursor protein to amyloidogenic peptides.
<b>Form</b>	PBS, pH7.4, containing 0.01% SKL, 1mM DTT, 5% Trehalose and Proclin300.
<b>Molecular Mass</b>	20.5kDa
<b>Endotoxin</b>	<1.0EU per 1g (determined by the LAL method)
<b>Purity</b>	> 90%
<b>Applications</b>	Positive Control; Immunogen; SDS-PAGE; WB. If bio-activity of the protein is needed, please check active protein.

 Tel: 1-631-559-9269 1-516-512-3133

 Email: [info@creative-biomart.com](mailto:info@creative-biomart.com)  Fax: 1-631-938-8127

 45-1 Ramsey Road, Shirley, NY 11967, USA

**Stability** The thermal stability is described by the loss rate. The loss rate was determined by accelerated thermal degradation test, that is, incubate the protein at 37 centigrade for 48h, and no obvious degradation and precipitation were observed. The loss rate is less than 5% within the expiration date under appropriate storage condition.

**Storage** Avoid repeated freeze/thaw cycles. Store at 2-8 centigrade for one month. Aliquot and store at -80 centigrade for 12 months.

**Reconstitution** Reconstitute in PBS or others.

## GENE INFORMATION

**Gene Name** THOP1 thimet oligopeptidase 1 [ Homo sapiens ]

**Official Symbol** THOP1

**Synonyms** THOP1; thimet oligopeptidase 1; thimet oligopeptidase; endopeptidase 24.15; TOP; MP78; EP24.15; MEPD\_HUMAN;

**Gene ID** 7064

**mRNA Refseq** NM\_003249

**Protein Refseq** NP\_003240

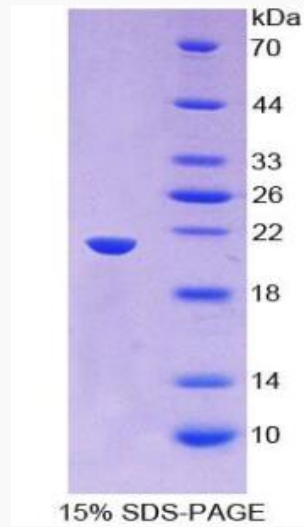
**MIM** 601117

**UniProt ID** P52888

 Tel: 1-631-559-9269 1-516-512-3133

 Email: [info@creative-biomart.com](mailto:info@creative-biomart.com)  Fax: 1-631-938-8127

 45-1 Ramsey Road, Shirley, NY 11967, USA



Tel: 1-631-559-9269 1-516-512-3133

Email: [info@creative-biomart.com](mailto:info@creative-biomart.com) Fax: 1-631-938-8127

45-1 Ramsey Road, Shirley, NY 11967, USA