

# GMP Recombinant Porcine THPO Protein, His-Tagged

**Cat. No.** THPO-01P    **Lot. No.** (See product label)

## SPECIFICATION

<b>Product Overview</b>	GMP Recombinant Porcine THPO Protein, His-Tagged was expressed in Escherichia coli cell-derived in an animal component free process under cGMP guidelines.
<b>Species</b>	Porcine
<b>Source</b>	E.coli
<b>Description</b>	Thrombopoietin is a glycoprotein hormone produced mainly by the liver and the kidney that regulates the production of platelets by the bone marrow. The protein functions in the iodination of tyrosine residues in thyroglobulin and phenoxy-ester formation between pairs of iodinated tyrosines to generate the thyroid hormones, thyroxine and triiodothyronine. It stimulates the production and differentiation of megakaryocytes, the bone marrow cells that fragment into large numbers of platelets.
<b>Form</b>	Lyophilized
<b>AA Sequence</b>	APPRLICDSRVLERYILEAKEGENATMGCAESCSFSENITVPDTKVNIFYAWKRMEVQ QQAMEVWQGLALLSEAILQGQALLANSSQPSEALQLHVDKAVSGLRSLTSLLRALG AQKEAIPLPDASPSSATPLRTFAVDTLCKLFRNYSNFLRGKLTLYTGEACRRRDR with h polyhistidine tag at the N-terminus
<b>Endotoxin</b>	<0.1 EU per 1 µg of the protein by the LAL method.
<b>Purity</b>	>95% as determined by SDS-PAGE. Ni-NTA chromatography

 Tel: 1-631-559-9269    1-516-512-3133

 Email: [info@creative-biomart.com](mailto:info@creative-biomart.com)     Fax: 1-631-938-8127

 45-1 Ramsey Road, Shirley, NY 11967, USA

<b>Notes</b>	Please use within one month after protein reconstitution.
<b>Storage</b>	Lyophilized protein should be stored at -20°C. Upon reconstitution, protein aliquots should be stored at -20°C or -80°C.
<b>Storage Buffer</b>	The protein was lyophilized from a solution containing 1X PBS, pH 7.4.
<b>Reconstitution</b>	It is recommended to reconstitute the lyophilized protein in sterile H <sub>2</sub> O to a concentration not less than 100 µg/mL and incubate the stock solution for at least 20 min to ensure sufficient re-dissolved.

## GENE INFORMATION

<b>Gene Name</b>	THPO thrombopoietin [ <i>Sus scrofa</i> (pig) ]
<b>Official Symbol</b>	THPO
<b>Synonyms</b>	ML; MGDF
<b>Gene ID</b>	100620258
<b>mRNA Refseq</b>	XM_005670050.3
<b>Protein Refseq</b>	XP_005670107.1

 Tel: 1-631-559-9269 1-516-512-3133

 Email: [info@creative-biomart.com](mailto:info@creative-biomart.com)  Fax: 1-631-938-8127

 45-1 Ramsey Road, Shirley, NY 11967, USA



kDa

75-

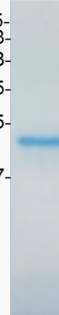
63-

48-

35-

25-

17-



Tel: 1-631-559-9269 1-516-512-3133

Email: [info@creative-biomart.com](mailto:info@creative-biomart.com) Fax: 1-631-938-8127

45-1 Ramsey Road, Shirley, NY 11967, USA