

## Recombinant Human THRB Protein (Trp239-Glu457), N-His tagged

Cat. No. THRB-6450H Lot. No. (See product label)

### SPECIFICATION

**Product Overview** Recombinant human THRB (Trp239-Glu457) fused with the N-His tag was expressed in E. coli.

**Species** Human

**Source** E.coli

**ProteinLength** Trp239-Glu457

**Form** Lyophilized powder/frozen liquid

**Molecular Mass** 27.07 kDa

**Purity** > 90 % as determined by SDS-PAGE

**Notes** For research use only.

**Storage** Use a manual defrost freezer and avoid repeated freeze thaw cycles. Store at 2 to 8 centigrade for one week. Store at -20 to -80 centigrade for twelve months from the date of receipt.

**Storage Buffer** Lyophilized from PBS, pH 7.4, 0.02 % NLS, 1 mM EDTA, 4 % trehalose, 1 % mannitol.

 Tel: 1-631-559-9269 1-516-512-3133

 Email: [info@creative-biomart.com](mailto:info@creative-biomart.com)  Fax: 1-631-938-8127

 45-1 Ramsey Road, Shirley, NY 11967, USA

**Reconstitution** Reconstitute in sterile water for a stock solution.

**Shipping** They are shipped out with dry ice/blue ice unless customers require otherwise.

## GENE INFORMATION

**Gene Name** [THRB thyroid hormone receptor, beta \[ Homo sapiens \(human\) \]](#)

**Official Symbol** [THRB](#)

**Synonyms**

THRB; thyroid hormone receptor, beta; ERBA2, pituitary resistance to thyroid hormone, PRTH, thyroid hormone receptor, beta (avian erythroblastic leukemia viral (v erb a) oncogene homolog 2), thyroid hormone receptor, beta (erythroblastic leukemia viral (v erb a) oncogene homolog 2, avian); thyroid hormone receptor beta; avian erythroblastic leukemia viral (v erb a) oncogene homolog 2; ERBA BETA; generalized resistance to thyroid hormone; GRTH; NR1A2; oncogene ERBA2; THR1; THRB1; THRB2; thyroid hormone receptor beta 1; nuclear receptor subfamily 1 group A member 2; thyroid hormone nuclear receptor beta variant 1; thyroid hormone receptor, beta (erythroblastic leukemia viral (v-erb-a) oncogene homolog 2, avian); PRTH; ERBA2; C-ERBA-2; C-ERBA-BETA; MGC126109; MGC126110;

**Gene ID** [7068](#)

**mRNA Refseq** [NM\\_000461](#)

**Protein Refseq** [NP\\_000452](#)

**MIM** [190160](#)

**UniProt ID** [P10828](#)

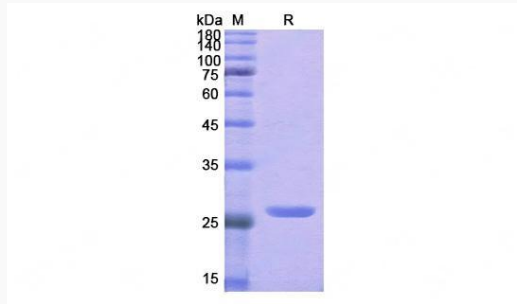
 Tel: 1-631-559-9269 1-516-512-3133

 Email: [info@creative-biomart.com](mailto:info@creative-biomart.com)  Fax: 1-631-938-8127

 45-1 Ramsey Road, Shirley, NY 11967, USA



SDS-PAGE



Tel: 1-631-559-9269 1-516-512-3133

Email: [info@creative-biomart.com](mailto:info@creative-biomart.com) Fax: 1-631-938-8127

45-1 Ramsey Road, Shirley, NY 11967, USA