

Recombinant Human THY1 protein, His-tagged

Cat. No. THY1-3229H Lot. No. (See product label)

SPECIFICATION

Product Overview	Recombinant Human THY1 protein(Gln20~Ile133), fused with N-terminal His tag, was expressed in E. coli.
Species	Human
Source	E.coli
ProteinLength	Gln20~Ile133
Form	PBS, pH7.4, containing 0.01% SKL, 1mM DTT, 5% Trehalose and Proclin300.
Molecular Mass	14kDa
Endotoxin	<1.0EU per 1g (determined by the LAL method)
Purity	> 97%
Storage	Avoid repeated freeze/thaw cycles. Store at 2-8°C for one month. Aliquot and store at -80°C for 12 months.
Reconstitution	Reconstitute in 10mM PBS (pH7.4) to a concentration of 0.1-1.0 mg/mL. Do not vortex.

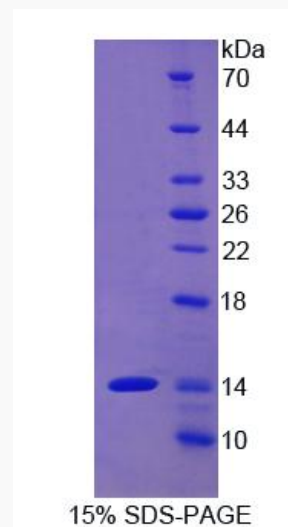
GENE INFORMATION

 Tel: 1-631-559-9269 1-516-512-3133

 Email: info@creative-biomart.com  Fax: 1-631-938-8127

 45-1 Ramsey Road, Shirley, NY 11967, USA

Gene Name	THY1 Thy-1 cell surface antigen [Homo sapiens]
Official Symbol	THY1
Synonyms	THY1; Thy-1 cell surface antigen; thy-1 membrane glycoprotein; CD90; CDw90; thy-1 antigen; Thy-1 T-cell antigen; FLJ33325;
Gene ID	7070
mRNA Refseq	NM_006288
Protein Refseq	NP_006279
MIM	188230
UniProt ID	P04216

SDS-PAGE


Tel: 1-631-559-9269 1-516-512-3133

Email: info@creative-biomart.com Fax: 1-631-938-8127

45-1 Ramsey Road, Shirley, NY 11967, USA