

# Recombinant Human TIAM2 Protein, Myc/DDK-tagged, C13 and N15-labeled

Cat. No. TIAM2-517H Lot. No. (See product label)

## SPECIFICATION

### Product Overview

TIAM2 MS Standard C13 and N15-labeled recombinant protein (NP\_001010927) with a C-terminal MYC/DDK tag, was expressed in HEK293 cells.

### Species

Human

### Source

HEK293

### Description

This gene encodes a guanine nucleotide exchange factor. A highly similar mouse protein specifically activates ras-related C3 botulinum substrate 1, converting this Rho-like guanosine triphosphatase (GTPase) from a guanosine diphosphate-bound inactive state to a guanosine triphosphate-bound active state. The encoded protein may play a role in neural cell development. Alternatively spliced transcript variants encoding different isoforms have been described.

### Molecular Mass

70.6 kDa

### AA Sequence

MEGPRENQDPPRPLARHLSADRLRKVIQELVDTEKSYVKDLSCLFELYLEPLQNE  
 TFLTQDEMESLFGSLPEMLEFQKVLETLEDGISASSDFNTLETSPQFRKLLFSLGGS  
 FLYYADHFKLYSGFCANHIKVQKVLERAKTDKAFKAFDARNPTKQHSSTLESYLIKP  
 VQRVLKYPLLLKELVSLTDQESEEHYHLTEALKAMEKVASHINEMQKIYEDYGTVFD  
 QLVAEQSGTEKEVTELSMGELLMHSTVSWLNPFLSLGKARKDLELTVFVFKRAVILV  
 YKENCKLKKKLPSNSRPAHNSTDLDPFKFRWLIPISALQVRLGNPAGTENNSIWELIH  
 TKSEIEGRPETIFQLCCSDSESKTNIVKVIRSILRENFRRIKCELPLEKTCKDRLVPLK

 Tel: 1-631-559-9269 1-516-512-3133

 Email: [info@creative-biomart.com](mailto:info@creative-biomart.com)  Fax: 1-631-938-8127

 45-1 Ramsey Road, Shirley, NY 11967, USA

NRVPVSAKLASSRSLKVLKNSSSNEWTGETGKGTLTLLDSDEGLSSGTQSSGCPTAE  
 GRQDSKSTSPGKYPHPGLADFADNLIKESDILSDEDDHRQTVKQGSPTKDIEIQFQ  
 RLRISEDPDVHPEAEQQPGPESGEGQKGGEQPKLVRGHFCPIKRKANSTKRDRGTL  
 LKAQIRHQSLDSQSENATIDLNSVLEREFVQSLTSVSEECFYETESHGKSTRTRPL  
 EQKLISEEDLAANDILDYKDDDDKV

**Purity** > 80% as determined by SDS-PAGE and Coomassie blue staining

**Stability** Stable for 3 months from receipt of products under proper storage and handling conditions.

**Storage** Store at -80 centigrade. Avoid repeated freeze-thaw cycles.

**Concentration** 50 µg/mL as determined by BCA

**Storage Buffer** 100 mM glycine, 25 mM Tris-HCl, pH 7.3.

## GENE INFORMATION

**Gene Name** [TIAM2 T-cell lymphoma invasion and metastasis 2 \[ Homo sapiens \(human\) \]](#)

**Official Symbol** [TIAM2](#)

**Synonyms** TIAM2; T-cell lymphoma invasion and metastasis 2; T-lymphoma invasion and metastasis-inducing protein 2; STEF; SIF and TIAM1-like exchange factor; TIAM-2; FLJ41865;

**Gene ID** [26230](#)

**mRNA Refseq** [NM\\_001010927](#)

 Tel: 1-631-559-9269 1-516-512-3133

 Email: [info@creative-biomart.com](mailto:info@creative-biomart.com)  Fax: 1-631-938-8127

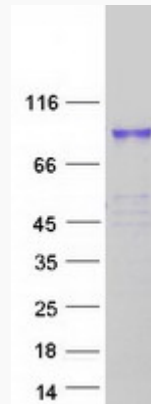
 45-1 Ramsey Road, Shirley, NY 11967, USA

**Protein Refseq** NP\_001010927

**MIM** 604709

**UniProt ID** Q8IVF5

**SDS-PAGE**



 Tel: 1-631-559-9269 1-516-512-3133

 Email: [info@creative-biomart.com](mailto:info@creative-biomart.com)  Fax: 1-631-938-8127

 45-1 Ramsey Road, Shirley, NY 11967, USA