

## Recombinant Human TIE1 Protein, hlgG/His-tagged

Cat. No. TIE1-01H Lot. No. (See product label)

### SPECIFICATION

<b>Product Overview</b>	Recombinant human Tie-1 (22-759aa, 977aa), fused to hlgG-His-tag at C-terminus, was expressed in HEK293 cell and purified by using conventional chromatography techniques.
<b>Species</b>	Human
<b>Source</b>	HEK293
<b>Description</b>	This gene encodes a member of the tyrosine protein kinase family. The encoded protein plays a critical role in angiogenesis and blood vessel stability by inhibiting angiopoietin 1 signaling through the endothelial receptor tyrosine kinase Tie2. Ectodomain cleavage of the encoded protein relieves inhibition of Tie2 and is mediated by multiple factors including vascular endothelial growth factor. Alternatively spliced transcript variants encoding multiple isoforms have been observed for this gene.
<b>Form</b>	Liquid
<b>Molecular Mass</b>	106.8 kDa
<b>AA Sequence</b>	AVDLTLLANLRLTDPQRFFLTVCVSGEAGAGRGSDAWGPPLLEKDDRIVRTPPGPPL RLARNGSHQVTLRGFSKPSDLVGVFSCVGGAGARRTRVIYVHNSPGAHLHPDKVTH TVNKGDTAVLSARVHKEKQTDVIWKSNGSYFYTLDWHEAQDGRFLLQLPNVQPPSS GIYSATYLEASPLGSAFFRLIVRGCGAGRWGPCTKECPGCLHGGVCHDHDGECV CPPGFTGTRCEQACREGRFGQSCQECPGISGCRGLTFCLPDPYGCSCGSGWRG

 Tel: 1-631-559-9269 1-516-512-3133

 Email: [info@creative-biomart.com](mailto:info@creative-biomart.com)  Fax: 1-631-938-8127

 45-1 Ramsey Road, Shirley, NY 11967, USA

SQCQEACAPGHFGADCRLQCQCQNGGTCDRFSGVCPSGWHGVHCEKSDRIPQI  
 LNMASELEFNLETMPRINCAAAGNPFVVRGSIELRKPDGTVLLSTKAIVEPEKTTAEF  
 EVPRLVLADSGFWECEVSTSGGQDSRRFKVNVKVPVPLAAPRLLTKQSRQLVSP  
 LVSFSGDGPSTVRLHYRPQDSTMDWSTIVDPSENVTLMNLRPKTGYSVRVQLSR  
 PEGEGEGAWGPPTLMTTDCPEPLLQPWLEGWHVEGTDRLRVSWSLPLVPGPLVG  
 DGFLRLWDGTRGQERRENVSSPQARTALLTGLTPGTHYQLDVQLYHCTLLGPASP  
 PAHVLLPPSGPPAPRHLHAQALSDSEIQLTWKHPEALPGPISKYVVEVQVAGGAGD  
 PLWIDVDRPEETSTIIRGLNASTRYLFRMRASIQGLGDWSNTVEESTLGNGLQAEGP  
 VQESRAAEEGLDQ

<b>Endotoxin</b>	< 1 EU/µg of protein (determined by LAL method)
<b>Purity</b>	> 90% by SDS-PAGE
<b>Applications</b>	SDS-PAGE
<b>Storage</b>	Can be stored at +2 to +8 centigrade for 1 week. For long term storage, aliquot and store at -20 to -80 centigrade. Avoid repeated freezing and thawing cycles.
<b>Concentration</b>	0.5 mg/mL (determined by Absorbance at 280nm)
<b>Storage Buffer</b>	20mM Tris-HCl (pH 8.0) containing 0.1M NaCl, 50% glycerol

## GENE INFORMATION

<b>Gene Name</b>	TIE1 tyrosine kinase with immunoglobulin like and EGF like domains 1 [ Homo sapiens (human) ]
<b>Official Symbol</b>	TIE1
<b>Synonyms</b>	TIE1; tyrosine kinase with immunoglobulin like and EGF like domains 1; TIE; JTK14;

 Tel: 1-631-559-9269 1-516-512-3133

 Email: [info@creative-biomart.com](mailto:info@creative-biomart.com)  Fax: 1-631-938-8127

 45-1 Ramsey Road, Shirley, NY 11967, USA

LMPHM11; tyrosine-protein kinase receptor Tie-1; tyrosine kinase with immunoglobulin and epidermal growth factor homology domains 1; EC 2.7.10.1

**Gene ID** 7075

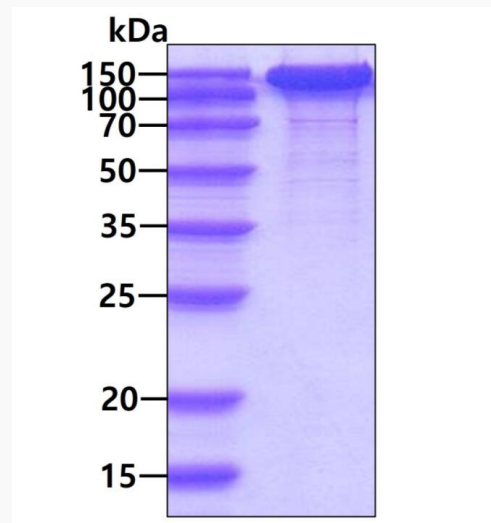
**mRNA Refseq** NM\_005424

**Protein Refseq** NP\_005415

**MIM** 600222

**UniProt ID** P35590

**SDS-PAGE**



3 µg by SDS-PAGE under reducing condition and visualized by coomassie blue stain

 Tel: 1-631-559-9269 1-516-512-3133

 Email: [info@creative-biomart.com](mailto:info@creative-biomart.com)  Fax: 1-631-938-8127

 45-1 Ramsey Road, Shirley, NY 11967, USA