

Recombinant Human TIE1 Protein, N-His tagged, Biotinylated

Cat. No. TIE1-101HB Lot. No. (See product label)

SPECIFICATION

Product Overview Biotinylated recombinant Human TIE1 protein with N-His tag was expressed in E. coli.

Species Human

Source E.coli

Description This gene encodes a member of the tyrosine protein kinase family. The encoded protein plays a critical role in angiogenesis and blood vessel stability by inhibiting angiopoietin 1 signaling through the endothelial receptor tyrosine kinase Tie2. Ectodomain cleavage of the encoded protein relieves inhibition of Tie2 and is mediated by multiple factors including vascular endothelial growth factor. Alternatively spliced transcript variants encoding multiple isoforms have been observed for this gene.

Molecular Mass 46.9 kDa

AA Sequence

```
MHHHHHSSGLVPRGSHMASMTGGQQMGRGSAVDLTLANLRLTDPQRFFLTCV
SGEAGAGRGSDAWGPPLLEKDDRIVRTPPGPPLRLARNGSHQVTLRGFSKPSDLV
GVFSCVGGAGARRTRVIYVHNSPGAHLLPDKVTHTVNKGDTAVLSARVHKEKQTDV
IWKSNGSYFYTLDWHEAQDGRFLLQLPNVQPPSSGIYSATYLEASPLGSAFFRLIVR
GCGAGRWGPCTKECPGCLHGGVCHDHDGECVCPGFTGTRCEQACREGRFGQ
SCQECPGISGCRGLTFCLPDYPYGCSCGSGWRGSCQEACAPGHFGADCRLQCQ
CQNGGTCDRFSGCVCPGWHGVHCEKSDRIPQILNMASELEFNLETMPRINCAA
GNPFPVRSIELRKPDGTVLLSTKAIVEPEKTTAEFEVPRLVLADSGFWEC
```

 Tel: 1-631-559-9269 1-516-512-3133

 Email: info@creative-biomart.com  Fax: 1-631-938-8127

 45-1 Ramsey Road, Shirley, NY 11967, USA

Endotoxin	<1 EU/μg by LAL
Purity	> 90% by SDS-PAGE
Storage	Store it under sterile conditions at -20 to -80 centigrade. It is recommended that the protein be aliquoted for optimal storage. Avoid repeated freeze-thaw cycles.
Concentration	0.05 mg/mL
Storage Buffer	50mM Tris pH9.0, 300mM NaCl, 20% Glycerol
Conjugation	Biotin

GENE INFORMATION

Gene Name	TIE1 tyrosine kinase with immunoglobulin-like and EGF-like domains 1 [Homo sapiens (human)]
Official Symbol	TIE1
Synonyms	TIE1; tyrosine kinase with immunoglobulin-like and EGF-like domains 1; TIE, tyrosine kinase with immunoglobulin and epidermal growth factor homology domains 1; tyrosine-protein kinase receptor Tie-1; JTK14; tyrosine kinase with immunoglobulin and epidermal growth factor homology domains 1; TIE;
Gene ID	7075
mRNA Refseq	NM_001253357
Protein Refseq	NP_001240286

 Tel: 1-631-559-9269 1-516-512-3133

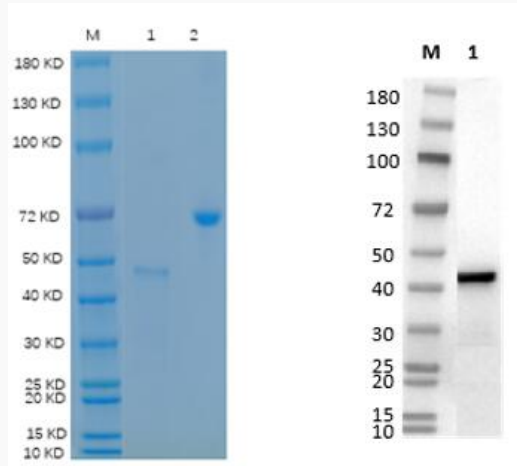
 Email: info@creative-biomart.com  Fax: 1-631-938-8127

 45-1 Ramsey Road, Shirley, NY 11967, USA

MIM 600222

UniProt ID P35590

**Reducing 12% SDS-
PAGE and WB
analysis profile of
purified TIE1**



1. TIE1
2. BSA

 Tel: 1-631-559-9269 1-516-512-3133

 Email: info@creative-biomart.com  Fax: 1-631-938-8127

 45-1 Ramsey Road, Shirley, NY 11967, USA