

Recombinant Human TIE1 protein, His-tagged

Cat. No. TIE1-3841H **Lot. No.** (See product label)

SPECIFICATION

Product Overview	Recombinant Human TIE1 protein(NP_005415.1) (Met 1-Gln 760) was expressed in HEK293, with a C-terminal polyhistidine tag.
Species	Human
Source	HEK293
ProteinLength	1-760 aa
Form	Lyophilized from sterile PBS, pH 7.4.
Molecular Mass	The secreted recombinant human TIE1 comprises 750 amino acids with a predicted molecular mass of 81.4 kDa. The apparent molecular mass of rhTIE1 is approximately 80-90 kDa in SDS-PAGE under reducing conditions.
Endotoxin	< 1.0 EU per µg protein as determined by the LAL method.
Purity	> 97 % as determined by SDS-PAGE
Storage	Store it under sterile conditions at -20°C to -80°C upon receiving. Recommend to aliquot the protein into smaller quantities for optimal storage. Avoid repeated freeze-thaw cycles.
Reconstitution	It is recommended that sterile water be added to the vial to prepare a stock solution of 0.2 ug/ul. Centrifuge the vial at 4°C before opening to recover the entire contents.

 Tel: 1-631-559-9269 1-516-512-3133

 Email: info@creative-biomart.com  Fax: 1-631-938-8127

 45-1 Ramsey Road, Shirley, NY 11967, USA

GENE INFORMATION

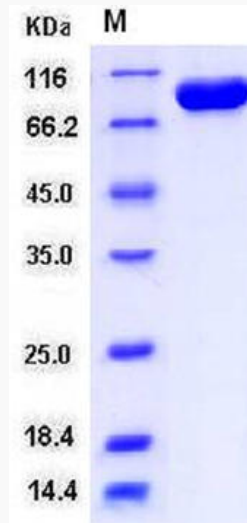
Gene Name	TIE1 tyrosine kinase with immunoglobulin-like and EGF-like domains 1 [Homo sapiens]
Official Symbol	TIE1
Synonyms	TIE1; tyrosine kinase with immunoglobulin-like and EGF-like domains 1; TIE, tyrosine kinase with immunoglobulin and epidermal growth factor homology domains 1; tyrosine-protein kinase receptor Tie-1; JTK14; tyrosine kinase with immunoglobulin and epidermal growth factor homology domains 1; TIE;
Gene ID	7075
mRNA Refseq	NM_001253357
Protein Refseq	NP_001240286
MIM	600222
UniProt ID	P35590

 Tel: 1-631-559-9269 1-516-512-3133

 Email: info@creative-biomart.com  Fax: 1-631-938-8127

 45-1 Ramsey Road, Shirley, NY 11967, USA

SDS-PAGE



 Tel: 1-631-559-9269 1-516-512-3133

 Email: info@creative-biomart.com  Fax: 1-631-938-8127

 45-1 Ramsey Road, Shirley, NY 11967, USA