

Recombinant Human TIE1 Protein (Ala22-Gln760), C-His tagged

Cat. No. TIE1-5401H Lot. No. (See product label)

SPECIFICATION

Product Overview	Recombinant human Tie-1 (Ala22-Gln760) fused with the C-terminal His tag was expressed in mammalian cells.
Species	Human
Source	Mammalian Cells
ProteinLength	Ala22-Gln760
Form	Lyophilized powder/frozen liquid
Molecular Mass	81.29 kDa
Purity	> 90 % as determined by SDS-PAGE
Notes	For research use only.
Storage	Use a manual defrost freezer and avoid repeated freeze thaw cycles. Store at 2 to 8 centigrade for one week. Store at -20 to -80 centigrade for twelve months from the date of receipt.
Storage Buffer	Supplied as solution form in PBS or lyophilized from PBS.
Reconstitution	Reconstitute in sterile water for a stock solution.

 Tel: 1-631-559-9269 1-516-512-3133

 Email: info@creative-biomart.com  Fax: 1-631-938-8127

 45-1 Ramsey Road, Shirley, NY 11967, USA

Shipping They are shipped out with dry ice/blue ice unless customers require otherwise.

GENE INFORMATION

Gene Name TIE1 tyrosine kinase with immunoglobulin-like and EGF-like domains 1 [Homo sapiens (human)]

Official Symbol TIE1

Synonyms TIE1; tyrosine kinase with immunoglobulin-like and EGF-like domains 1; TIE, tyrosine kinase with immunoglobulin and epidermal growth factor homology domains 1; tyrosine-protein kinase receptor Tie-1; JTK14; tyrosine kinase with immunoglobulin and epidermal growth factor homology domains 1; TIE;

Gene ID 7075

mRNA Refseq NM_001253357

Protein Refseq NP_001240286

MIM 600222

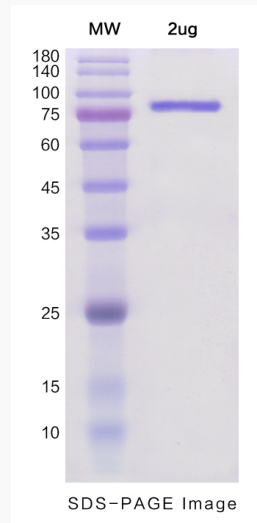
UniProt ID P35590

 Tel: 1-631-559-9269 1-516-512-3133

 Email: info@creative-biomart.com  Fax: 1-631-938-8127

 45-1 Ramsey Road, Shirley, NY 11967, USA

SDS-PAGE



 Tel: 1-631-559-9269 1-516-512-3133

 Email: info@creative-biomart.com  Fax: 1-631-938-8127

 45-1 Ramsey Road, Shirley, NY 11967, USA