

Recombinant Human TIGIT Protein (Met22-Pro141), C-His tagged

Cat. No. TIGIT-5738H Lot. No. (See product label)

SPECIFICATION

Product Overview	Recombinant human TIGIT (Met22-Pro141) fused with the C-terminal His tag was expressed in mammalian cells.
Species	Human
Source	Mammalian Cells
ProteinLength	Met22-Pro141
Form	Lyophilized powder/frozen liquid
Molecular Mass	13.2 kDa
Purity	> 90 % as determined by SDS-PAGE
Notes	For research use only.
Storage	Use a manual defrost freezer and avoid repeated freeze thaw cycles. Store at 2 to 8 centigrade for one week. Store at -20 to -80 centigrade for twelve months from the date of receipt.
Storage Buffer	Supplied as solution form in PBS or lyophilized from PBS.
Reconstitution	Reconstitute in sterile water for a stock solution.

 Tel: 1-631-559-9269 1-516-512-3133

 Email: info@creative-biomart.com  Fax: 1-631-938-8127

 45-1 Ramsey Road, Shirley, NY 11967, USA

Shipping They are shipped out with dry ice/blue ice unless customers require otherwise.

GENE INFORMATION

Gene Name [TIGIT T cell immunoreceptor with Ig and ITIM domains \[Homo sapiens \(human\) \]](#)

Official Symbol [TIGIT](#)

Synonyms TIGIT; T cell immunoreceptor with Ig and ITIM domains; V set and immunoglobulin domain containing 9, V set and transmembrane domain containing 3, VSIG9, VSTM3; T-cell immunoreceptor with Ig and ITIM domains; DKFZp667A205; FLJ39873; V-set and transmembrane domain containing 3; V-set and immunoglobulin domain containing 9; Washington University cell adhesion molecule; V-set and transmembrane domain-containing protein 3; V-set and immunoglobulin domain-containing protein 9; VSIG9; VSTM3; WUCAM;

Gene ID [201633](#)

mRNA Refseq [NM_173799](#)

Protein Refseq [NP_776160](#)

MIM [612859](#)

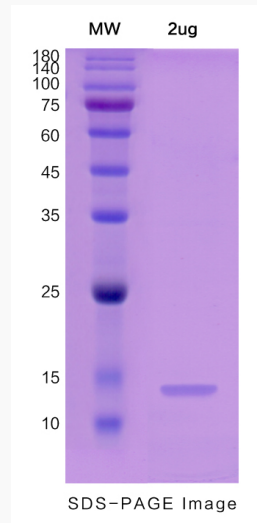
UniProt ID [Q495A1](#)

 Tel: 1-631-559-9269 1-516-512-3133

 Email: info@creative-biomart.com  Fax: 1-631-938-8127

 45-1 Ramsey Road, Shirley, NY 11967, USA

SDS-PAGE



 Tel: 1-631-559-9269 1-516-512-3133

 Email: info@creative-biomart.com  Fax: 1-631-938-8127

 45-1 Ramsey Road, Shirley, NY 11967, USA