

## Recombinant Human TIMM8B Protein, His-tagged

Cat. No. TIMM8B-408H Lot. No. (See product label)

### SPECIFICATION

<b>Product Overview</b>	Recombinant Human TIMM8B Protein (Ala2-Gln83) with N-His tag was expressed in E. coli.
<b>Species</b>	Human
<b>Source</b>	E.coli
<b>ProteinLength</b>	Ala2-Gln83
<b>Description</b>	This gene encodes a member of a well-conserved family of proteins with similarity to yeast Tim mitochondrial import proteins. This gene is encoded by a nuclear gene and is transported into the intermembrane space of the mitochondrion. When formed into complexes, these proteins guide membrane-spanning proteins across the mitochondrial intermembrane space before they are added into the mitochondrial inner membrane. This gene is adjacent to succinate dehydrogenase, subunit D (SDHD), in which mutations have been found in affected members of families with hereditary paraganglioma.
<b>Form</b>	Freeze-dried powder
<b>Molecular Mass</b>	Predicted Molecular Mass: 12.9 kDa Accurate Molecular Mass: 14 kDa
<b>Purity</b>	> 95%

 Tel: 1-631-559-9269 1-516-512-3133

 Email: [info@creative-biomart.com](mailto:info@creative-biomart.com)  Fax: 1-631-938-8127

 45-1 Ramsey Road, Shirley, NY 11967, USA

<b>Applications</b>	Positive Control; Immunogen; SDS-PAGE; WB.
<b>Stability</b>	The thermal stability is described by the loss rate. The loss rate was determined by accelerated thermal degradation test, that is, incubate the protein at 37 centigrade for 48h, and no obvious degradation and precipitation were observed. The loss rate is less than 5% within the expiration date under appropriate storage condition.
<b>Storage</b>	Avoid repeated freeze/thaw cycles. Store at 2-8 centigrade for one month. Aliquot and store at -80 centigrade for 12 months.
<b>Storage Buffer</b>	20mM Tris, 150mM NaCl, pH8.0, containing 1mM EDTA, 1mM DTT, 0.01% SKL, 5% Trehalose and Proclin300.
<b>Reconstitution</b>	Reconstitute in sterile water to a concentration of 0.1-1.0 mg/mL. Do not vortex.

## GENE INFORMATION

<b>Gene Name</b>	TIMM8B translocase of inner mitochondrial membrane 8 homolog B (yeast) [ Homo sapiens (human) ]
<b>Official Symbol</b>	TIMM8B
<b>Synonyms</b>	TIMM8B; translocase of inner mitochondrial membrane 8 homolog B (yeast); translocase of inner mitochondrial membrane 8 (yeast) homolog B; mitochondrial import inner membrane translocase subunit Tim8 B; DDP2; FLJ21744; MGC102866; MGC117373; TIM8B; DDP-like protein; deafness dystonia protein 2
<b>Gene ID</b>	26521
<b>mRNA Refseq</b>	NM_012459

 Tel: 1-631-559-9269 1-516-512-3133

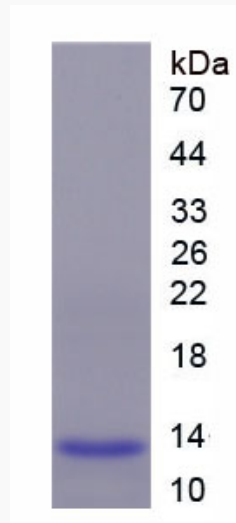
 Email: [info@creative-biomart.com](mailto:info@creative-biomart.com)  Fax: 1-631-938-8127

 45-1 Ramsey Road, Shirley, NY 11967, USA

**Protein Refseq** NP\_036591

**MIM** 606659

**UniProt ID** Q9Y5J9



 Tel: 1-631-559-9269 1-516-512-3133

 Email: [info@creative-biomart.com](mailto:info@creative-biomart.com)  Fax: 1-631-938-8127

 45-1 Ramsey Road, Shirley, NY 11967, USA