

Recombinant Full Length Human TIMM9 Protein, His tagged

Cat. No. TIMM9-1029H Lot. No. (See product label)

SPECIFICATION

Product Overview	Purified recombinant protein of Human translocase of inner mitochondrial membrane 9 homolog (yeast) (TIMM9), nuclear gene encoding mitochondrial protein, full length, with N-terminal HIS tag, expressed in E. coli.
Species	Human
Source	E.coli
Description	TIMM9 belongs to a family of evolutionarily conserved proteins that are organized in heterooligomeric complexes in the mitochondrial intermembrane space. These proteins mediate the import and insertion of hydrophobic membrane proteins into the mitochondrial inner membrane.
Form	25 mM Tris-HCl, pH 8.0, 150 mM NaCl, 1% sarkosyl, 10% glycerol
Molecular Mass	10.2 kDa
Purity	> 80% as determined by SDS-PAGE and Coomassie blue staining
Notes	For testing in cell culture applications, please filter before use. Note that you may experience some loss of protein during the filtration process.
Storage	Store at -80 centigrade. Stable for 12 months from the date of receipt of the product under proper storage and handling conditions. Avoid repeated freeze-thaw cycles.

 Tel: 1-631-559-9269 1-516-512-3133

 Email: info@creative-biomart.com  Fax: 1-631-938-8127

 45-1 Ramsey Road, Shirley, NY 11967, USA

Concentration > 0.05 µg/µL as determined by microplate BCA method

Shipping Dry Ice

GENE INFORMATION

Gene Name TIMM9 translocase of inner mitochondrial membrane 9 [Homo sapiens (human)]

Official Symbol TIMM9

Synonyms TIMM9; translocase of inner mitochondrial membrane 9; TIM9; TIM9A; mitochondrial import inner membrane translocase subunit Tim9; translocase of inner mitochondrial membrane 9 homolog

Gene ID 26520

mRNA Refseq NM_012460

Protein Refseq NP_036592

MIM 607384

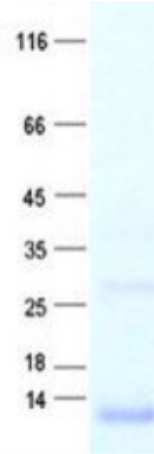
UniProt ID Q9Y5J7

 Tel: 1-631-559-9269 1-516-512-3133

 Email: info@creative-biomart.com  Fax: 1-631-938-8127

 45-1 Ramsey Road, Shirley, NY 11967, USA

SDS-PAGE and WB



 Tel: 1-631-559-9269 1-516-512-3133

 Email: info@creative-biomart.com  Fax: 1-631-938-8127

 45-1 Ramsey Road, Shirley, NY 11967, USA