

Recombinant Human TIMP1 Protein

Cat. No. TIMP1-0058H Lot. No. (See product label)

SPECIFICATION

Product Overview	Recombinant Human TIMP1 Protein without tag was expressed in HEK293.
Species	Human
Source	HEK293
Description	<p>This gene belongs to the TIMP gene family. The proteins encoded by this gene family are natural inhibitors of the matrix metalloproteinases (MMPs), a group of peptidases involved in degradation of the extracellular matrix. In addition to its inhibitory role against most of the known MMPs, the encoded protein is able to promote cell proliferation in a wide range of cell types, and may also have an anti-apoptotic function. Transcription of this gene is highly inducible in response to many cytokines and hormones. In addition, the expression from some but not all inactive X chromosomes suggests that this gene inactivation is polymorphic in human females. This gene is located within intron 6 of the synapsin I gene and is transcribed in the opposite direction.</p>
Applications	ELISA, CLIA, CG
Notes	For research use only, not for use in diagnostic procedure.
Storage	Short term (up to 7 days) store at 2–8 centigrade. Long term, store at - 20 centigrade. Avoid multiple freeze/thaw cycles.
Storage Buffer	Supplied as a 0.2 µm filtered solution of PBS, pH7.4

 Tel: 1-631-559-9269 1-516-512-3133

 Email: info@creative-biomart.com  Fax: 1-631-938-8127

 45-1 Ramsey Road, Shirley, NY 11967, USA

GENE INFORMATION

Gene Name	TIMP1 TIMP metalloproteinase inhibitor 1 [Homo sapiens (human)]
Official Symbol	TIMP1
Synonyms	TIMP1; TIMP metalloproteinase inhibitor 1; CLGI, TIMP, tissue inhibitor of metalloproteinase 1 (erythroid potentiating activity, collagenase inhibitor); metalloproteinase inhibitor 1; EPO; TIMP-1; collagenase inhibitor; erythroid potentiating activity; erythroid-potentiating activity; fibroblast collagenase inhibitor; tissue inhibitor of metalloproteinases 1; EPA; HCl; CLGI; TIMP; FLJ90373;
Gene ID	7076
mRNA Refseq	NM_003254
Protein Refseq	NP_003245
MIM	305370
UniProt ID	P01033

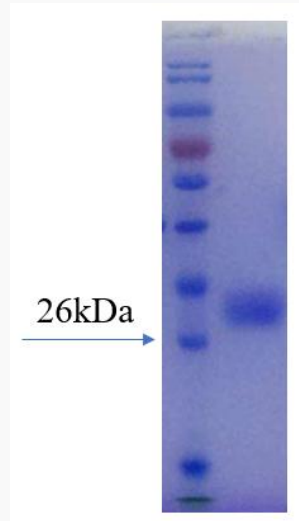
 Tel: 1-631-559-9269 1-516-512-3133

 Email: info@creative-biomart.com  Fax: 1-631-938-8127

 45-1 Ramsey Road, Shirley, NY 11967, USA



SDS-PAGE



Tel: 1-631-559-9269 1-516-512-3133

Email: info@creative-biomart.com Fax: 1-631-938-8127

45-1 Ramsey Road, Shirley, NY 11967, USA