

## Recombinant Horse TIMP1 protein, His & GST-tagged

Cat. No. TIMP1-2787H Lot. No. (See product label)

### SPECIFICATION

<b>Product Overview</b>	Recombinant Horse TIMP1 aa. (Cys24~Ser178 (Accession # O02722)) fused with N-terminal His & GST tag was produced in E. coli cells.
<b>Species</b>	Horse
<b>Source</b>	E.coli
<b>ProteinLength</b>	Cys24~Ser178
<b>Form</b>	Freeze-dried powder
<b>Molecular Mass</b>	Predicted Molecular Mass: 47.3kDa
<b>Endotoxin</b>	<1.0EU per 1g (determined by the LAL method)
<b>Purity</b>	>95%
<b>Characteristic</b>	The isoelectric point is 5.7.
<b>Applications</b>	SDS-PAGE; WB; ELISA; IP
<b>Stability</b>	The thermal stability is described by the loss rate. The loss rate was determined by accelerated thermal degradation test, that is, incubate the protein at 37°C for 48h, and no obvious degradation and precipitation were observed. The loss rate is less than 5% within the expiration date under appropriate storage condition.

 Tel: 1-631-559-9269 1-516-512-3133

 Email: [info@creative-biomart.com](mailto:info@creative-biomart.com)  Fax: 1-631-938-8127

 45-1 Ramsey Road, Shirley, NY 11967, USA

<b>Storage</b>	Avoid repeated freeze/thaw cycles. Store at 2-8°C for one month. Aliquot and store at -80°C for 12 months.
<b>Storage buffer</b>	Supplied as lyophilized form in PBS, pH7.4, containing 5% trehalose, 0.01% sarcosyl.
<b>Reconstitution</b>	Reconstitute in sterile PBS, pH7.2-pH7.4.

## GENE INFORMATION

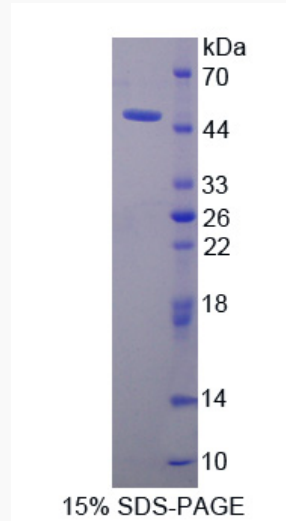
<b>Gene Name</b>	TIMP1 TIMP metalloproteinase inhibitor 1 [ <i>Equus caballus</i> (horse) ]
<b>Official Symbol</b>	TIMP1
<b>Synonyms</b>	TIMP-1; tissue inhibitor of metalloproteinase 1; tissue inhibitor of metalloproteinases 1; metalloproteinase inhibitor 1
<b>Gene ID</b>	100034220
<b>mRNA Refseq</b>	NM_001082515.1
<b>Protein Refseq</b>	NP_001075984.1
<b>UniProt ID</b>	O02722

 Tel: 1-631-559-9269 1-516-512-3133

 Email: [info@creative-biomart.com](mailto:info@creative-biomart.com)  Fax: 1-631-938-8127

 45-1 Ramsey Road, Shirley, NY 11967, USA

**SDS-PAGE**



 Tel: 1-631-559-9269 1-516-512-3133

 Email: [info@creative-biomart.com](mailto:info@creative-biomart.com)  Fax: 1-631-938-8127

 45-1 Ramsey Road, Shirley, NY 11967, USA