

## Active Recombinant Human TIMP1 protein, His-tagged

Cat. No. TIMP1-878H Lot. No. (See product label)

### SPECIFICATION

<b>Product Overview</b>	Active Recombinant Human TIMP1 protein(NP_003245.1) (Met 1-Ala 207) with a C-terminal polyhistidine tag was expressed in HEK293.
<b>Species</b>	Human
<b>Source</b>	HEK293
<b>ProteinLength</b>	1-207 aa
<b>Form</b>	Lyophilized from sterile PBS, pH 7.4.
<b>Bio-activity</b>	Measured by its ability to inhibit human MMP-2 cleavage of a fluorogenic peptide substrate MCA-PLGL-DPA-AR-NH <sub>2</sub> . The IC <sub>50</sub> value is < 6 nM.
<b>Molecular Mass</b>	The secreted recombinant human TIMP1 comprises 195 amino acids with a predicted molecular mass of 22 kDa. As a result of glycosylation, rhTIMP1 migrates as an approximately 30 kDa band in SDS-PAGE under reducing conditions.
<b>Endotoxin</b>	< 1.0 EU per µg of the protein as determined by the LAL method.
<b>Purity</b>	> 97 % as determined by SDS-PAGE
<b>Storage</b>	Store it under sterile conditions at -20°C to -80°C upon receiving. Recommend to aliquot the protein into smaller quantities for optimal storage. Avoid repeated freeze-thaw cycles.

 Tel: 1-631-559-9269 1-516-512-3133

 Email: [info@creative-biomart.com](mailto:info@creative-biomart.com)  Fax: 1-631-938-8127

 45-1 Ramsey Road, Shirley, NY 11967, USA

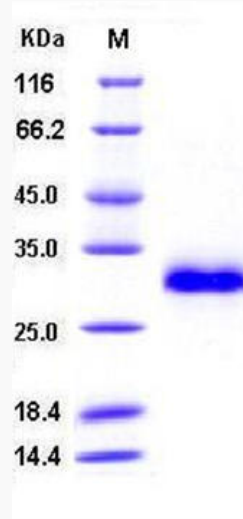
<b>Reconstitution</b>	It is recommended that sterile water be added to the vial to prepare a stock solution of 0.2 ug/ul. Centrifuge the vial at 4°C before opening to recover the entire contents.
<b>protein Refseq-Weblink</b>	<a href="http://www.ncbi.nlm.nih.gov/protein/NP_003245.1">http://www.ncbi.nlm.nih.gov/protein/NP_003245.1</a>
<b>Unit ID</b>	P01033
<b>Unit ID-Weblink</b>	<a href="http://www.uniprot.org/uniprot/P01033">http://www.uniprot.org/uniprot/P01033</a>
<b>GENE INFORMATION</b>	
<b>Gene Name</b>	<a href="#">TIMP1</a> <a href="#">TIMP metalloproteinase inhibitor 1 [ Homo sapiens ]</a>
<b>Official Symbol</b>	<a href="#">TIMP1</a>
<b>Synonyms</b>	TIMP1; TIMP metalloproteinase inhibitor 1; CLGI, TIMP, tissue inhibitor of metalloproteinase 1 (erythroid potentiating activity, collagenase inhibitor); metalloproteinase inhibitor 1; EPO; TIMP-1; collagenase inhibitor; erythroid potentiating activity; erythroid-potentiating activity; fibroblast collagenase inhibitor; tissue inhibitor of metalloproteinases 1; EPA; HCl; CLGI; TIMP; FLJ90373;
<b>Gene ID</b>	<a href="#">7076</a>
<b>mRNA Refseq</b>	<a href="#">NM_003254</a>
<b>protein Refseq</b>	NP_003245
<b>MIM</b>	<a href="#">305370</a>

 Tel: 1-631-559-9269 1-516-512-3133

 Email: [info@creative-biomart.com](mailto:info@creative-biomart.com)  Fax: 1-631-938-8127

 45-1 Ramsey Road, Shirley, NY 11967, USA

SDS-PAGE



 Tel: 1-631-559-9269 1-516-512-3133

 Email: [info@creative-biomart.com](mailto:info@creative-biomart.com)  Fax: 1-631-938-8127

 45-1 Ramsey Road, Shirley, NY 11967, USA