

Recombinant Human TIMP2 protein, His-tagged

Cat. No. TIMP2-448H Lot. No. (See product label)

SPECIFICATION

Product Overview	Recombinant Human TIMP2 protein(P16035)(Cys27-Pro220), fused with C-terminal His tag, was expressed in HEK293.
Species	Human
Source	HEK293
ProteinLength	Cys27-Pro220
Tag	C-His
Form	Lyophilized from 0.22µm filtered solution in PBS (pH 7.4). Normally 8% trehalose is added as protectant before lyophilization.
Bio-activity	Immobilized Human Human TIMP-2, His Tag at 0.5ug/ml (100ul/well) on the plate. Dose response curve for Anti-TIMP-2 Antibody, hFc Tag with the EC50 of 3.3ng/ml determined by ELISA.
Molecular Mass	The protein has a predicted MW of 22.9 kDa. Due to glycosylation, the protein migrates to 24-26 kDa based on Tris-Bis PAGE result.
Endotoxin	Less than 1EU per µg by the LAL method.
Purity	> 95% as determined by Tris-Bis PAGE;> 95% as determined by HPLC

 Tel: 1-631-559-9269 1-516-512-3133

 Email: info@creative-biomart.com  Fax: 1-631-938-8127

 45-1 Ramsey Road, Shirley, NY 11967, USA

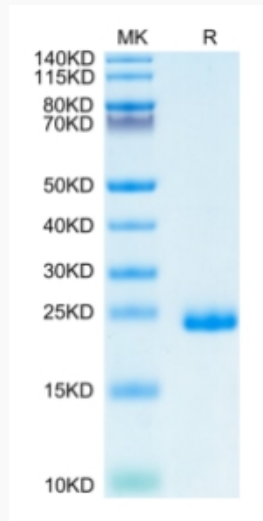
Storage	Reconstituted protein stable at -80°C for 12 months, 4°C for 1 week. Use a manual defrost freezer and avoid repeated freeze-thaw cycles.
Reconstitution	Centrifuge tubes before opening. Reconstituting to a concentration more than 100 µg/ml is recommended. Dissolve the lyophilized protein in distilled water.
GENE INFORMATION	
Gene Name	TIMP2 TIMP metallopeptidase inhibitor 2 [Homo sapiens]
Official Symbol	TIMP2
Synonyms	TIMP2; TIMP metallopeptidase inhibitor 2; tissue inhibitor of metalloproteinase 2; metalloproteinase inhibitor 2; CSC 21K; TIMP-2; tissue inhibitor of metalloproteinases 2; CSC-21K;
Gene ID	7077
mRNA Refseq	NM_003255
Protein Refseq	NP_003246
MIM	188825
UniProt ID	P16035

 Tel: 1-631-559-9269 1-516-512-3133

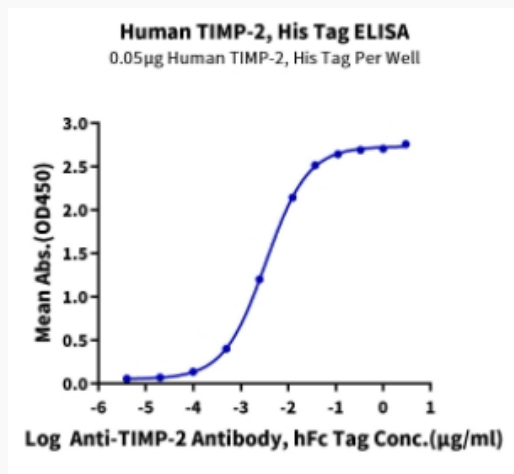
 Email: info@creative-biomart.com  Fax: 1-631-938-8127

 45-1 Ramsey Road, Shirley, NY 11967, USA

Tris-Bis PAGE



ELISA Data



 Tel: 1-631-559-9269 1-516-512-3133

 Email: info@creative-biomart.com  Fax: 1-631-938-8127

 45-1 Ramsey Road, Shirley, NY 11967, USA