

## Recombinant Human TIMP2 protein, His-tagged

Cat. No. TIMP2-881H Lot. No. (See product label)

### SPECIFICATION

<b>Product Overview</b>	Recombinant Human TIMP2 protein (Cys27-Pro220), fused to His tag at C-terminus, was expressed in human 293 cells (HEK293).
<b>Species</b>	Human
<b>Source</b>	HEK293
<b>ProteinLength</b>	194
<b>Description</b>	<p>TIMP metalloproteinase inhibitor 2 is also known as TIMP2, which belongs to the protease inhibitor I35 (TIMP) family. This family protein are natural inhibitors of the matrix metalloproteinases, a group of peptidases involved in degradation of the extracellular matrix. The TIMP family encompasses four members (TIMP1, TIMP2, TIMP3, TIMP4), and they inhibit most MMPs by forming non-covalent binary complex. In addition to an inhibitory role against metalloproteinases, TIMP2 has a unique role among TIMP family members in its ability to directly suppress the proliferation of endothelial cells. As a result, TIMP-2 may be critical to the maintenance of tissue homeostasis by suppressing the proliferation of quiescent tissues in response to angiogenic factors, and by inhibiting protease activity in tissues undergoing remodelling of the extracellular matrix.</p>
<b>Form</b>	Lyophilized from 0.22 um filtered solution in 50 mM Tris, 150 mM NaCl, pH7.5, 10% trehalose.
<b>Molecular Mass</b>	The protein has a calculated MW of 22.6 kDa. The protein migrates as 23-26 kDa

 Tel: 1-631-559-9269 1-516-512-3133

 Email: [info@creative-biomart.com](mailto:info@creative-biomart.com)  Fax: 1-631-938-8127

 45-1 Ramsey Road, Shirley, NY 11967, USA

	under reducing (R) condition (SDS-PAGE).
<b>Endotoxin</b>	Less than 1.0 EU per ug by the LAL method.
<b>Purity</b>	>95% as determined by SDS-PAGE.
<b>Storage</b>	<p>For long term storage, the product should be stored at lyophilized state at -20 centigrade or lower.</p> <p>Please avoid repeated freeze-thaw cycles.</p> <p>This product is stable after storage at:</p> <p>-20 centigrade to -70 centigrade for 12 months in lyophilized state;</p> <p>-70 centigrade for 3 months under sterile conditions after reconstitution.</p>
<b>Reconstitution</b>	It is recommended that sterile water be added to the vial to prepare a stock solution of 0.2 ug/ul. Centrifuge the vial at 4°C before opening to recover the entire contents.

## GENE INFORMATION

<b>Gene Name</b>	TIMP2
<b>Official Symbol</b>	TIMP2
<b>Synonyms</b>	TIMP2; TIMP metalloproteinase inhibitor 2; tissue inhibitor of metalloproteinase 2; metalloproteinase inhibitor 2; CSC 21K; TIMP-2; tissue inhibitor of metalloproteinases 2; CSC-21K
<b>Gene ID</b>	7077
<b>mRNA Refseq</b>	NM_003255
<b>Protein Refseq</b>	NP_003246

 Tel: 1-631-559-9269 1-516-512-3133

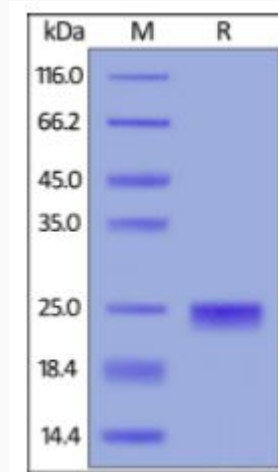
 Email: [info@creative-biomart.com](mailto:info@creative-biomart.com)  Fax: 1-631-938-8127

 45-1 Ramsey Road, Shirley, NY 11967, USA

MIM 188825

UniProt ID P16035

**SDS-PAGE of TIMP2-881H**



Human TIMP-2, His Tag on SDS-PAGE under reducing (R) condition. The gel was stained overnight with Coomassie Blue. The purity of the protein is greater than 95%.

Tel: 1-631-559-9269 1-516-512-3133

Email: [info@creative-biomart.com](mailto:info@creative-biomart.com) Fax: 1-631-938-8127

45-1 Ramsey Road, Shirley, NY 11967, USA