

# Recombinant Human TINAGL1 Protein (Ala22-His467), C-His tagged

Cat. No. TINAGL1-6263H Lot. No. (See product label)

## SPECIFICATION

<b>Product Overview</b>	Recombinant human TINAGL1 (Ala22-His467) fused with the C-terminal His tag was expressed in mammalian cells.
<b>Species</b>	Human
<b>Source</b>	Mammalian Cells
<b>ProteinLength</b>	Ala22-His467
<b>Form</b>	Lyophilized powder/frozen liquid
<b>Molecular Mass</b>	49.06 kDa
<b>Purity</b>	> 90 % as determined by SDS-PAGE
<b>Notes</b>	For research use only.
<b>Storage</b>	Use a manual defrost freezer and avoid repeated freeze thaw cycles. Store at 2 to 8 centigrade for one week. Store at -20 to -80 centigrade for twelve months from the date of receipt.
<b>Storage Buffer</b>	Supplied as solution form in PBS or lyophilized from PBS.
<b>Reconstitution</b>	Reconstitute in sterile water for a stock solution.

 Tel: 1-631-559-9269 1-516-512-3133

 Email: [info@creative-biomart.com](mailto:info@creative-biomart.com)  Fax: 1-631-938-8127

 45-1 Ramsey Road, Shirley, NY 11967, USA

**Shipping** They are shipped out with dry ice/blue ice unless customers require otherwise.

## GENE INFORMATION

**Gene Name** TINAGL1 tubulointerstitial nephritis antigen-like 1 [ Homo sapiens (human) ]

**Official Symbol** TINAGL1

**Synonyms** TINAGL1; tubulointerstitial nephritis antigen-like 1; LCN7, lipocalin 7, TINAG like 1; tubulointerstitial nephritis antigen-like; ARG1; LIECG3; P3ECSL; TINAGRP; OLRG-2; TIN-Ag-RP; lipocalin 7; TINAG-like 1; TIN Ag-related protein; androgen-regulated gene 1; oxidized-LDL responsive gene 2; glucocorticoid-inducible protein 5; tubulointerstitial nephritis antigen-related protein; LCN7;

**Gene ID** 64129

**mRNA Refseq** NM\_001204414

**Protein Refseq** NP\_001191343

**MIM** 616064

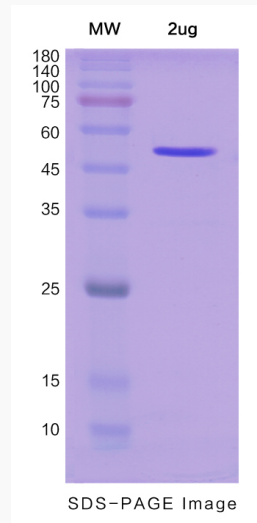
**UniProt ID** Q9GZM7

 Tel: 1-631-559-9269 1-516-512-3133

 Email: [info@creative-biomart.com](mailto:info@creative-biomart.com)  Fax: 1-631-938-8127

 45-1 Ramsey Road, Shirley, NY 11967, USA

**SDS-PAGE**



 Tel: 1-631-559-9269 1-516-512-3133

 Email: [info@creative-biomart.com](mailto:info@creative-biomart.com)  Fax: 1-631-938-8127

 45-1 Ramsey Road, Shirley, NY 11967, USA