

## Active Recombinant Human TIPARP Protein, Flag-tagged

Cat. No. TIPARP-298H Lot. No. (See product label)

### SPECIFICATION

<b>Product Overview</b>	Human PARP7 (a.a. 400-657) with N-terminal FLAG-tag was expressed in a Baculovirus infected Sf9 cell expression system.
<b>Species</b>	Human
<b>Source</b>	Insect Cells
<b>ProteinLength</b>	400-657
<b>Description</b>	This gene encodes a member of the poly(ADP-ribose) polymerase superfamily. Studies of the mouse ortholog have shown that the encoded protein catalyzes histone poly(ADP-ribosyl)ation and may be involved in T-cell function. Alternative splicing results in multiple transcript variants.
<b>Form</b>	Aqueous buffer solution
<b>Bio-activity</b>	>40 pmol/min/μg
<b>Molecular Mass</b>	31 kDa
<b>Applications</b>	Useful for the study of enzyme kinetics, screening inhibitors, and selectivity profiling.
<b>Storage</b>	At least 6 months at –80 centigrade. Storing diluted enzyme is not recommended, if necessary, use carrier protein (BSA 0.1 – 0.5%).

 Tel: 1-631-559-9269 1-516-512-3133

 Email: [info@creative-biomart.com](mailto:info@creative-biomart.com)  Fax: 1-631-938-8127

 45-1 Ramsey Road, Shirley, NY 11967, USA

<b>Concentration</b>	0.4 mg/mL
<b>Storage Buffer</b>	40 mM Tris-HCl, pH 8.0, 110 mM NaCl, 2.2 mM KCl, 0.04% Tween20, 3 mM DTT, 20% Glycerol and 100 µg/mL FLAG peptide.
<b>Shipping</b>	-80 centigrade
<b>Warning</b>	Avoid freeze/thaw cycles.

## GENE INFORMATION

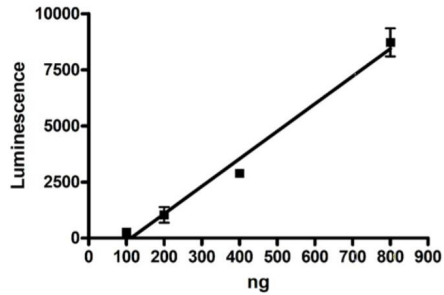
<b>Gene Name</b>	TIPARP TCDD inducible poly(ADP-ribose) polymerase [ Homo sapiens (human) ]
<b>Official Symbol</b>	TIPARP
<b>Synonyms</b>	TIPARP; TCDD inducible poly(ADP-ribose) polymerase; PARP7; ARTD14; pART14; protein mono-ADP-ribosyltransferase TIPARP; ADP-ribosyltransferase diphtheria toxin-like 14; poly [ADP-ribose] polymerase 7; EC 2.4.2.30
<b>Gene ID</b>	25976
<b>mRNA Refseq</b>	NM_015508
<b>Protein Refseq</b>	NM_015508
<b>MIM</b>	612480
<b>UniProt ID</b>	Q7Z3E1

 Tel: 1-631-559-9269 1-516-512-3133

 Email: [info@creative-biomart.com](mailto:info@creative-biomart.com)  Fax: 1-631-938-8127

 45-1 Ramsey Road, Shirley, NY 11967, USA

**Specific Activity**



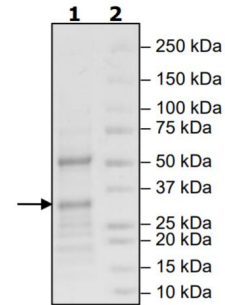
**SDS-PAGE**


**4-20% SDS-PAGE  
Coomassie staining**

**Lane 1:**  
2 µg PARP7

**Lane 2:**  
Protein Marker

**MW:** 31 kDa  
**Purity:** ≥33%



 Tel: 1-631-559-9269 1-516-512-3133

 Email: [info@creative-biomart.com](mailto:info@creative-biomart.com)  Fax: 1-631-938-8127

 45-1 Ramsey Road, Shirley, NY 11967, USA