

## Recombinant Human TIPARP protein, His-tagged

**Cat. No.** TIPARP-5443H    **Lot. No.** (See product label)

### SPECIFICATION

<b>Product Overview</b>	Recombinant Human TIPARP protein(Q7Z3E1)(1-657aa), fused with N-terminal His tag, was expressed in E.coli.
<b>Species</b>	Human
<b>Source</b>	E.coli
<b>ProteinLength</b>	1-657aa
<b>Form</b>	If the delivery form is liquid, the default storage buffer is Tris/PBS-based buffer, 5%-50% glycerol. If the delivery form is lyophilized powder, the buffer before lyophilization is Tris/PBS-based buffer, 6% Trehalose, pH 8.0.
<b>Molecular Mass</b>	82.2 kDa
<b>Purity</b>	Greater than 85% as determined by SDS-PAGE.
<b>Storage</b>	Store at -20°C/-80°C upon receipt, aliquoting is necessary for mutiple use. Avoid repeated freeze-thaw cycles.
<b>Reconstitution</b>	We recommend that this vial be briefly centrifuged prior to opening to bring the contents to the bottom. Please reconstitute protein in deionized sterile water to a concentration of 0.1-1.0 mg/mL. We recommend to add 5-50% of glycerol (final concentration) and aliquot for long-term storage at -20°C/-80°C.

 Tel: 1-631-559-9269    1-516-512-3133

 Email: [info@creative-biomart.com](mailto:info@creative-biomart.com)     Fax: 1-631-938-8127

 45-1 Ramsey Road, Shirley, NY 11967, USA

**AA Sequence**

MEMETTEPEPDCVVQPPSPDDFSCQMRLSEKITPLKTCFKKKDQKRLGTGTLRSL  
 RPILNTLLESGSLDGVFRSRNQSTDENSLHEPMMKKAMEINSSCPAENNMSVLIPD  
 RTNVGDQIPEAHPSTEAPERVVPIQDHSFPSETLSGTVADSTPAHFQTDLLHPVSSD  
 VPTSPDCLDKVIDYVPGIFQENSFTIQYILDTSDKLSTELFQDKSEEASLDLVFELVNO  
 LQYHTHQENGIEICMDFLQGTTCIYGRDCLKHHTVLPYHWQIKRTTTQKWQSVFNDS  
 QEHLERFYCNPENDRMRMKYGGQEFWADLNAMNVYETTEFDQLRRLSTPPSSNV  
 NSIYHTVWKFFCRDHFGWREYPESVIRLIEEANSRGLKEVRFMMWNNHYILHNSFF  
 RREIKRRPLFRSCFILLPYLQTLGGVPTQAPPPLEATSSSQIICPDGVTSANFYPETW  
 VYMHPSQDFIQVPVSAEDKSYRIIYNLFHKTVPFEKYRILQILRVQNQFLWEKYKRKK  
 EYMNRMKMFGRDRIINERHLFHGTSQDQVVDGICKHNFDPRVCGKHATMFGQGSYFA  
 KKASYSHNFSKKSSKGVHFMFLAKVLTGRYTMGSHGMRRPPPVPNGSVTSDLYDS  
 CVDNFFEPQIFVIFNDDQSYFYFVIQYEEVSNTVSI

**GENE INFORMATION**

**Gene Name** [TIPARP TCDD-inducible poly\(ADP-ribose\) polymerase \[ Homo sapiens \]](#)

**Official Symbol** [TIPARP](#)

**Synonyms** TIPARP; TCDD-inducible poly(ADP-ribose) polymerase; TCDD-inducible poly [ADP-ribose] polymerase; DDF1; DKFZP434J214; DKFZp686N0351; PARP 1; PARP 7; PARP7; pART14; RM1; poly [ADP-ribose] polymerase 7; FLJ40466; DKFZp434J214; DKFZp686P1838;

**Gene ID** [25976](#)

**mRNA Refseq** [NM\\_001184717](#)

**Protein Refseq** [NP\\_001171646](#)

**MIM** [612480](#)

 Tel: 1-631-559-9269 1-516-512-3133

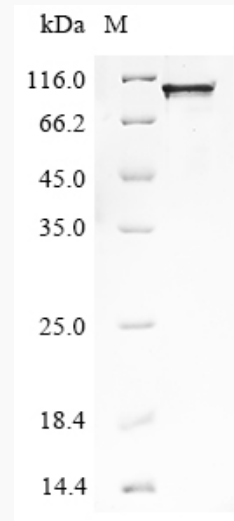
 Email: [info@creative-biomart.com](mailto:info@creative-biomart.com)  Fax: 1-631-938-8127

 45-1 Ramsey Road, Shirley, NY 11967, USA

UniProt ID

Q7Z3E1

SDS-PAGE



 Tel: 1-631-559-9269 1-516-512-3133

 Email: [info@creative-biomart.com](mailto:info@creative-biomart.com)  Fax: 1-631-938-8127

 45-1 Ramsey Road, Shirley, NY 11967, USA