

Recombinant Human Tight Junction Protein 1 (Zona Occludens 1)

Cat. No. TJP1-239H **Lot. No.** (See product label)

SPECIFICATION

Product Overview	Recombinant Human ZO-1 protein expressed in <i>E.coli</i> encodes 334-634 amino acids and has a molecular mass of 61 kDa through SDS-PAGE analysis.
Species	Human
Source	E.coli
Description	ZO-1 is a peripheral membrane protein that is associated with tight junctions which are found on the cytoplasmic surface of epithelial and endothelial cell membrane. ZO-1 has a MW of 225kDa and is found in two isoforms that differ by the presence or absence of an 80 amino acid region known as 'motif-a'.
Formulation	Recombinant Human ZO-1 protein at 100g/ml in 50mM Tris-Acetate, pH7.5, 1mM EDTA and 20% Glycerol.
Application and suggested dilutions	•ELISA •Inhibition Assays •Western Blotting
Characterization	On SDS-PAGE commassie blue stained gel, the purified recombinant protein shows a band at 61 kDa.
Storage & stability	Store vial at -20°C to -80°C. When stored at the recommended temperature, this protein is stable for 12 months.

 Tel: 1-631-559-9269 1-516-512-3133

 Email: info@creative-biomart.com  Fax: 1-631-938-8127

 45-1 Ramsey Road, Shirley, NY 11967, USA

GENE INFORMATION

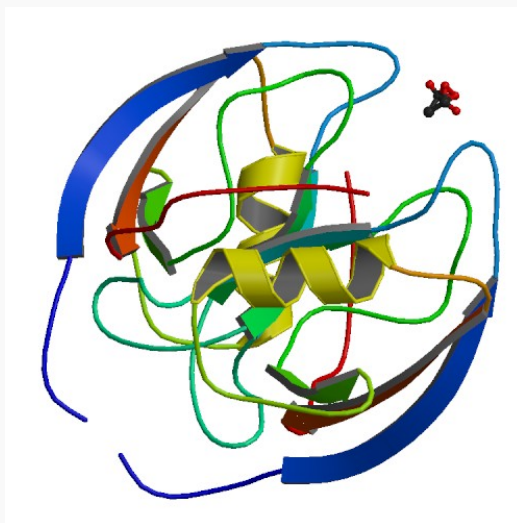
Gene Name	TJP1 tight junction protein 1 (zona occludens 1) [Homo sapiens]
Synonyms	TJP1; tight junction protein 1 (zona occludens 1); ZO-1; MGC133289; DKFZp686M05161; zonula occludens 1 protein; tight junction protein ZO-1; 3' partial; zona occludens 1; Zonula occludens protein 1; Tight junction protein 1; OTTHUMP00000174520; zonula occludens 1 protein
Gene ID	7082
mRNA Refseq	NM_003257
Protein Refseq	NP_003248
MIM	601009
UniProt ID	Q07157
Chromosome Location	15q13
Pathway	Adherens junction; Epithelial cell signaling in Helicobacter pylori infection; Gap junction; Tight junction; Vibrio cholerae infection; Apoptosis; Gap junction trafficking and regulation
Function	protein binding

 Tel: 1-631-559-9269 1-516-512-3133

 Email: info@creative-biomart.com  Fax: 1-631-938-8127

 45-1 Ramsey Road, Shirley, NY 11967, USA

PDB rendering based
on 2h2b.



 Tel: 1-631-559-9269 1-516-512-3133

 Email: info@creative-biomart.com  Fax: 1-631-938-8127

 45-1 Ramsey Road, Shirley, NY 11967, USA