

Recombinant Full Length Human TJP1 Protein, C-Flag-tagged

Cat. No. TJP1-384HFL Lot. No. (See product label)

SPECIFICATION

Product Overview	Recombinant Full Length Human TJP1 Protein, fused to Flag-tag at C-terminus, was expressed in Mammalian cells.
Species	Human
Source	Mammalian Cells
Description	This gene encodes a member of the membrane-associated guanylate kinase (MAGUK) family of proteins, and acts as a tight junction adaptor protein that also regulates adherens junctions. Tight junctions regulate the movement of ions and macromolecules between endothelial and epithelial cells. The multidomain structure of this scaffold protein, including a postsynaptic density 95/disc-large/zona occludens (PDZ) domain, a Src homology (SH3) domain, a guanylate kinase (GuK) domain and unique (U) motifs all help to co-ordinate binding of transmembrane proteins, cytosolic proteins, and F-actin, which are required for tight junction function. Alternative splicing results in multiple transcript variants encoding different isoforms.
Form	25 mM Tris HCl, pH 7.3, 100 mM glycine, 10% glycerol.
Molecular Mass	195.3 kDa
AA Sequence	MSARAAAAKSTAMEETAWEQHTVTLHRAPGFGFGIAISGGRDNPWFQSGETSIVIS DVLKGGPAEGQLQ ENDRVAMVNGVSMNDNVEHAFVQQLRKSQGNKAKITIRKKKV QIPVSRPDPEPVSDNEEDSYDEEIHDPV SGRSGVVNRRSEKIWPRDRSASRERSLS PRSDRRSVASSQPAKPTKVTLVKSRKNEEYGLRLASHIFVKE ISQDSLAARDGNIQE

 Tel: 1-631-559-9269 1-516-512-3133

 Email: info@creative-biomart.com  Fax: 1-631-938-8127

 45-1 Ramsey Road, Shirley, NY 11967, USA

GDVVLKINGTVTENMSLTD AKTLIERSK GKLMVVQRDERATLLNVPDLSDSIHS AN
ASERDDISEIQSLASDHSGRSHDRPPRRSRSPDQRSEPSDHSRHSPQQPSNGS
LRSRDEERISKPG AVSTPVKHADDHTPKTVEEVTVRNEKQTPSLPEPKPVYAQVG
QPDVDLPVSPSDGVLPNSTHEDGILRP SMKLVKFRKGDVGLRLAGGNDVGIFVAG
VLEDSPAAKEGLEEGDQILRVNNDFTNIIRREEAVLFLDL PKGEEVTLAQKKKDVY
RRIVESDVGDSFYIRTHFEYEKESPYGLSFNKGEVFRVVDTLYNGKLGSWLAI RIGK
NHKEVERGIIPKNRAEQLASVQYTLPKTAGGDRADFWFRGLRSSKRNLRSRED
LSAQPVQTKF PAYERVVLREAGFLRPVTIFGPIADVAREKLAREEPDIYQIAKSEPRD
AGTDQRSSGIIRLHTIKQIIDQ DKHALLDVTPNAVDRNLNYAQWYPIVVFLNPDSKQGV
KTMRMLCPE SRKSARKLYERSHKLRKNNHHLFT TTINLNSMNDGWYGALKEAIQQ
QQNQLVWVSE GKADGATSDDLHLHDDRLSYLSAPGSEYSMYSTDSRHT SDYEDT
DTEGGAYTDQELDETLNDEVGTPPESAITRSSEPVREDSSGMHHEHQTYPPYSPQA
QPQPIHRI DSPGFKPASQQKAEASSVPYLSPETNPASSTS AVNHNVNLTNVRLEE
PTPAPSTSYSPQADSLRTPSTE AAHIMLRDQEPSLSSHVDPTKVYRKDPYPEEMMR
QNHVLKQPAVSHPGHRPDKEPNLTYEPQLPYVEKQA SRDLEQPTYRYESSSYTDQ
FSRNYEHLRYEDRVPMYEEQWSYDDKQPYPSRPPFDNQHSQDLSRQHP EES
SERGYFPRFEEPAPLSYDSRPRYEQAPRASALRHEEQPAPGYDTHGRLRPEAQPH
PSAGPKPAESKQ YFEQYSRSYEQVPPQGFTSRAGHFEPLHGAAVPLIPSSQHK
PEALPSNTKPLPPPPTQTEEEEDPAMK PQSVLTRVKMFENKRSASLETKKDVNDTG
SFKPPEVASKPSGAPIIGPKPTSQNFSEHDKTLYRIPEPQ KPQLKPPEDIVRSNHY
DPEEDEEYRKQLSYFDRRSFENKPPAHIAASHLSEPAKPAHSQNQSNFSSYSS KG
KPPEADGVDRSFGEKRYEPIQATPPPPPLPSQYAQPSQPVTASLHIHSGAHGEG
NSVSLDFQNSLV SKPDPPPSQNKPATFRPPNREDTAQAAFYPQKSFDPKAPVNGT
EQTQKTVTPAYNRFTPKPYTSSARPFERKFESPKFNHLLPSETAHKPDLSKPTPTS
PKTLVKSHSLAQPEFDSGVETFSIHAEKPKYQINNISTV PKAIPVSPSAVEEDED
GHTVVATARGIFNSGGVLSSIETGVSIIIPQGAIEGVEQEYFKVCRDNS ILPLDK
EKGETLLSPLVMCGPHGLKFLKPVELRLPHCDPKTWQNKCLPGDPNYLVGANCVSV
LIDHFTRTRPLEQKLISEEDLAANDILDYKDDDDKV

Purity

> 80% as determined by SDS-PAGE and Coomassie blue staining.

 Tel: 1-631-559-9269 1-516-512-3133 Email: info@creative-biomart.com  Fax: 1-631-938-8127 45-1 Ramsey Road, Shirley, NY 11967, USA

Stability	Stable for 12 months from the date of receipt of the product under proper storage and handling conditions. Avoid repeated freeze-thaw cycles.
Storage	Store at -80 centigrade.
Concentration	>50 ug/mL as determined by microplate BCA method.
Preparation	Recombinant protein was captured through anti-DDK affinity column followed by conventional chromatography steps.
Protein Families	Druggable Genome
Protein Pathways	Adherens junction, Epithelial cell signaling in Helicobacter pylori infection, Gap junction, Tight junction, Vibrio cholerae infection
Full Length	Full L.

GENE INFORMATION

Gene Name	TJP1 tight junction protein 1 [Homo sapiens (human)]
Official Symbol	TJP1
Synonyms	ZO-1
Gene ID	7082
mRNA Refseq	NM_003257.5
Protein Refseq	NP_003248.3

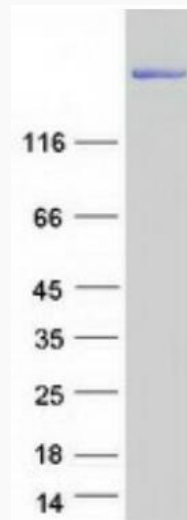
 Tel: 1-631-559-9269 1-516-512-3133

 Email: info@creative-biomart.com  Fax: 1-631-938-8127

 45-1 Ramsey Road, Shirley, NY 11967, USA

MIM 601009

UniProt ID Q07157



Coomassie blue staining of purified TJP1 protein.

 Tel: 1-631-559-9269 1-516-512-3133

 Email: info@creative-biomart.com  Fax: 1-631-938-8127

 45-1 Ramsey Road, Shirley, NY 11967, USA