

Recombinant Full Length Human TK1 Protein, C-DDK-tagged

Cat. No. TK1-1029HFL Lot. No. (See product label)

SPECIFICATION

Product Overview	Recombinant Full Length Human TK1 Protein, fused to DDK-tag at C-terminus, was expressed in Mammalian cells.
Species	Human
Source	Mammalian Cells
Description	The protein encoded by this gene is a cytosolic enzyme that catalyzes the addition of a gamma-phosphate group to thymidine. This creates dTMP and is the first step in the biosynthesis of dTTP, which is one component required for DNA replication. The encoded protein, whose levels fluctuate depending on the cell cycle stage, can act as a low activity dimer or a high activity tetramer. High levels of this protein have been used as a biomarker for diagnosing and categorizing many types of cancers.
Form	25 mM Tris HCl, pH 7.3, 100 mM glycine, 10% glycerol.
Molecular Mass	27 kDa
AA Sequence	A DNA sequence from TrueORF clone, RC218280, encoding human full-length TK1.
Purity	> 80% as determined by SDS-PAGE and Coomassie blue staining.
Stability	Stable for 12 months from the date of receipt of the product under proper storage and handling conditions. Avoid repeated freeze-thaw cycles.

 Tel: 1-631-559-9269 1-516-512-3133

 Email: info@creative-biomart.com  Fax: 1-631-938-8127

 45-1 Ramsey Road, Shirley, NY 11967, USA

Storage	Store at -80 centigrade.
Concentration	>50 ug/mL as determined by microplate BCA method.
Protein Families	Druggable Genome, Stem cell - Pluripotency
Protein Pathways	Drug metabolism - other enzymes, Metabolic pathways, Pyrimidine metabolism
Full Length	Full L.

GENE INFORMATION

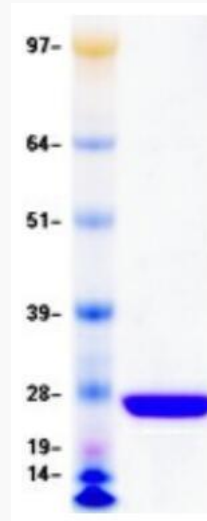
Gene Name	TK1 thymidine kinase 1 [Homo sapiens (human)]
Official Symbol	TK1
Synonyms	TK2
Gene ID	7083
mRNA Refseq	NM_003258.5
Protein Refseq	NP_003249.3
MIM	188300
UniProt ID	P04183

 Tel: 1-631-559-9269 1-516-512-3133

 Email: info@creative-biomart.com  Fax: 1-631-938-8127

 45-1 Ramsey Road, Shirley, NY 11967, USA

SDS-PAGE



 Tel: 1-631-559-9269 1-516-512-3133

 Email: info@creative-biomart.com  Fax: 1-631-938-8127

 45-1 Ramsey Road, Shirley, NY 11967, USA