

## Recombinant Canine TK1 protein, His-tagged

Cat. No. TK1-1699C Lot. No. (See product label)

### SPECIFICATION

|                         |   |
|-------------------------|---|
| <b>Product Overview</b> | Recombinant Canine TK1 protein(E2QXP4)(Ser2-Asn242), fused with C-terminal His tag, was expressed in E.coli.  |
| <b>Species</b>          | Canine  |
| <b>Source</b>           | C-His   |
| <b>ProteinLength</b>    | Ser2-Asn242   |
| <b>Tag</b>              | C-His   |
| <b>Form</b>             | Supplied as 0.22µm filtered solution in 20mM NaAc, 150mM NaCl (pH 5.0).   |
| <b>Bio-activity</b>     |   |
| <b>Molecular Mass</b>   | The protein has a predicted MW of 27.41 kDa same as Tris-Bis PAGE result.   |
| <b>Endotoxin</b>        | Less than 1EU per µg by the LAL method.   |
| <b>Purity</b>           | > 95% as determined by Tris-Bis PAGE.   |
| <b>Storage</b>          | Valid for 12 months from date of receipt when stored at -80°C.;Recommend to aliquot the protein into smaller quantities for optimal storage. Please do not repeated freeze-thaw cycles. |

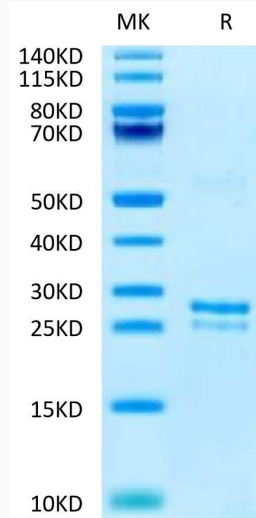
 Tel: 1-631-559-9269 1-516-512-3133

 Email: [info@creative-biomart.com](mailto:info@creative-biomart.com)  Fax: 1-631-938-8127

 45-1 Ramsey Road, Shirley, NY 11967, USA

**Reconstitution**

It is recommended that sterile water be added to the vial to prepare a stock solution of 0.2 ug/ul. Centrifuge the vial at 4°C before opening to recover the entire contents.

**Tris-Bis PAGE**

 Tel: 1-631-559-9269 1-516-512-3133

 Email: [info@creative-biomart.com](mailto:info@creative-biomart.com)  Fax: 1-631-938-8127

 45-1 Ramsey Road, Shirley, NY 11967, USA